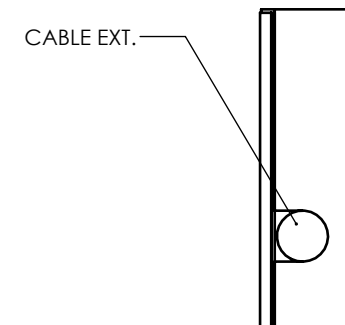
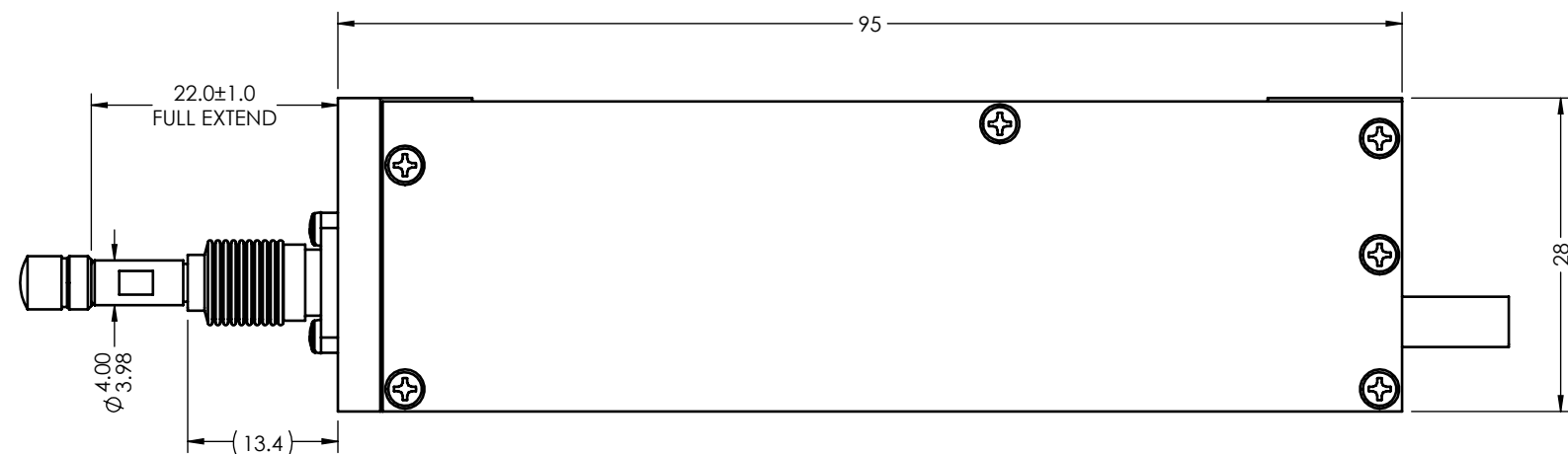
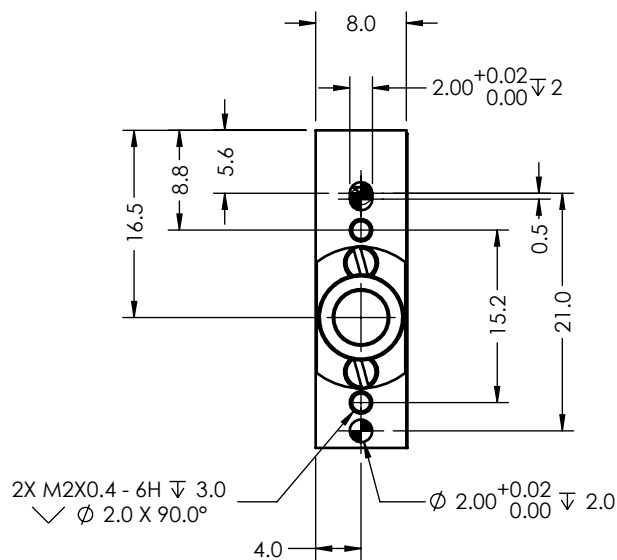
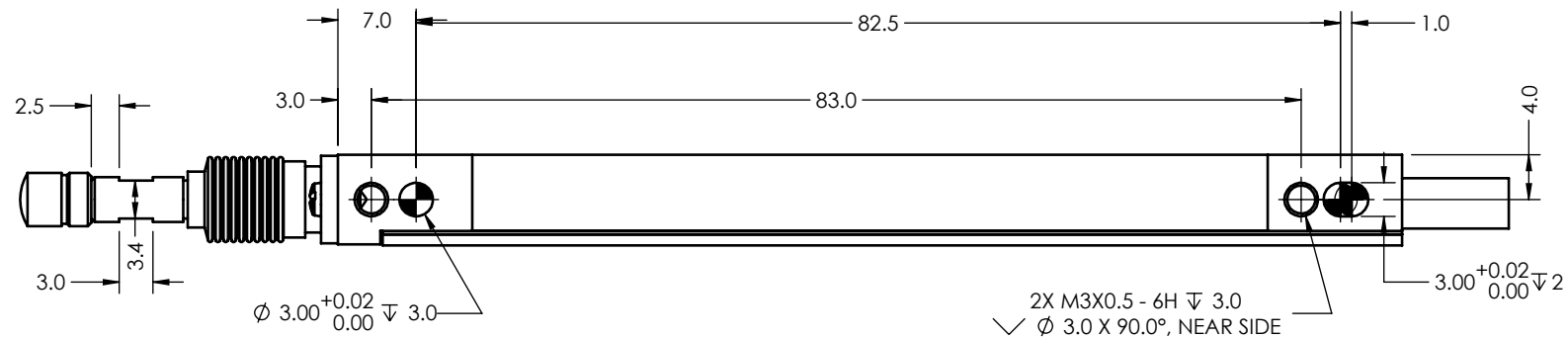


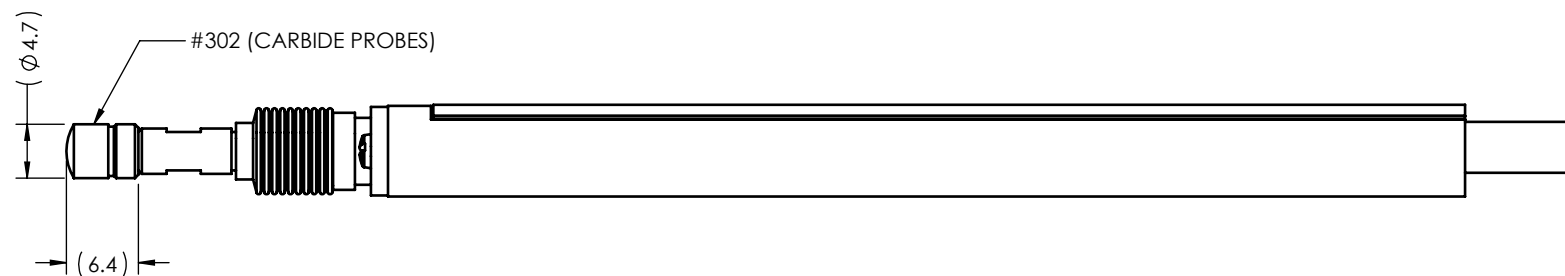
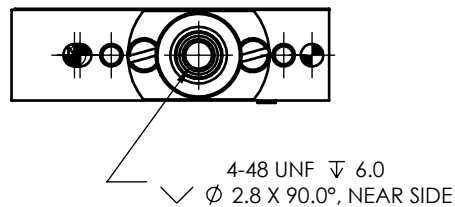
LINEAR SPECIFICATION:

1. LINEAR STROKE: 10.0 +1/-0 mm
2. ENCODER RESOLUTION: 1 μm, 0.5 μm, 0.1 μm
3. OPERATION VOLTAGE: +5 VDC TO +15 VDC.
4. MOVING MASS: 0.011 Kg.
5. TOTAL MASS: 0.054 Kg.
6. OPERATING TEMPERATURE: 0°C TO 50°C.
7. SPRING OPTION: CENTURY # 462 (1.2-1.5N MID STROKE VERTICAL).
8. IP 65 WITH M12 CONNECTOR & 54 WITH TINNED LEADS AND PIGTAIL.

REVISIONS				
REV	ECR	DESCRIPTION	DATE	APPROVED
A	-	INITIAL RELEASE	9/21/2020	HE
B	-	ADDED SPRING AND TINNED LEAD DATA, UPDATED MOUNTING HOLES SIZE AND LOCATIONS	10/14/2020	HE
C	-	ADDED M12 CONNECTOR TABLE	10/19/2020	HE
D	-	UPDATED NOTES	10/29/2020	HE
E	-	UPDATED OPERATING TEMPRATURE	11/10/2020	HE
F	-	UPDATE OUTLINE DWG	10/21/2021	HE
G	-	UPDATED FRONT BUSHING	1/31/2022	HE



SHAFT FEMALE THREAD DATA:



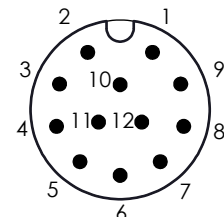
PIGTAIL - IP54 (STANDARD)	
PIN No	HDB-26P
1	(L) PH. A+
2	(L) PH. B+
3	(L) PH. Z+
4	NC
5	NC
6	NC
7	NC
8	NC
9	NC
10	(L) PH. A-
11	(L) PH. B-
12	(L) PH. Z-
13	NC
14	NC
15	NC
16	NC
17	NC
18	NC
19	+5 VDC
20	5V RTN
21	NC
22	NC
23	NC
24	NC
25	NC
26	NC

TINNED LEADS - IP54 (OPTION1)

1	+5VDC	BRN
2	(L) PH. I-	BLK
3	(L) PH. I+	RED
4	(L) PH. B-	YEL
5	(L) PH. B+	GRN
6	(L) PH. A-	VIO
7	(L) PH. A+	BLU
8	5V RTN	ORG

M12 CONNECTOR - IP65 (OPTION2)

1	+5-15 VDC
2	(L) PH. I-
3	(L) PH. I+
4	(L) PH. B-
5	(L) PH. B+
6	(L) PH. A-
7	(L) PH. A+
8	NC
9	5-15V RTN
10	NC
11	NC
12	NC



<p>UNLESS OTHERWISE SPECIFIED</p> <p>ALL DIMENSIONS ARE IN MM</p> <p>BREAK EDGES AND REMOVE BURRS</p> <p>TOLERANCES</p> <p>X: ±0.5 X.X: ±0.1</p> <p>X.XX: ±0.03 ANGLE: ±0.1°</p> <p>CONCENTRICITY: ±0.025</p> <p>ROUNDNESS: ±0.025</p> <p>EDGE BREAKS: 0.2 MAX</p> <p>ALL DIMENSIONS AND TOLERANCES ARE FINAL</p>	<p>MATERIAL: SEE BOMS</p> <p>FINISH:</p> <p>MACHINE FINISH: 1.6</p> <p>INTERPRET PER: ASME Y14.5-2009</p>	<p>NAME: HE</p> <p>DATE: 10/14/2020</p> <p>CHK BY: TMV</p> <p>10/14/2020</p> <p>ENG APP</p> <p>MFG APP</p> <p>QA APP</p>	<p>5807 VAN ALLEN WAY</p> <p>CARLSBAD CA, 92008</p> <p>(760) 929-7588</p>	
	<p>SMAC</p> <p>MOVING COIL ACTUATORS</p>	<p>TITLE: MSA8-010-01-0-CS</p>	<p>SIZE: B</p> <p>PART NO: MSA8-010-01-0-CS</p> <p>SCALE: 1.5:1 DO NOT SCALE</p>	<p>REV: G</p> <p>SHEET: 1 / 1</p>
	<p>THIRD ANGLE PROJECTION</p>	<p>PROPRIETARY AND CONFIDENTIAL</p> <p>THE INFORMATION CONTAINED IN THIS DRAWING IS THE SOLE PROPERTY OF SMAC. ANY REPRODUCTION IN PART OR AS A WHOLE WITHOUT THE WRITTEN PERMISSION OF SMAC IS PROHIBITED.</p>	<p>REV: G</p>	