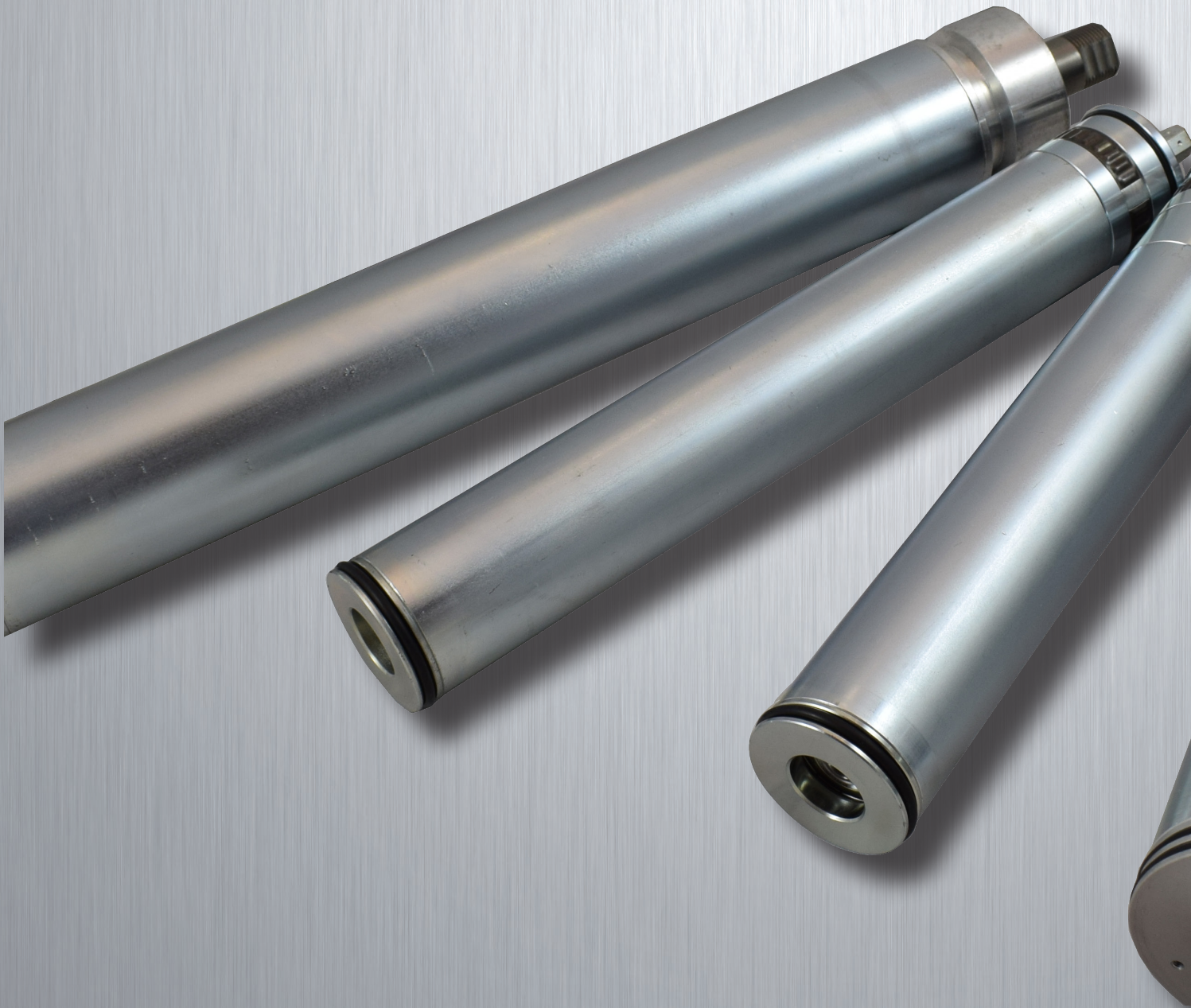


SEE IT BEFORE IT HAPPENS

**MOTOR
POWER**

COMPANY



MOTORROLLER Frameless - gearless cartridge only

MTR FL	46	140	13	H1	D0	XXX
Model		Size	Winding	Feedback	Connection	Optional
1		2	3	4	5	6

1 Model

MTR FL 46
MTR FL 76



2 Size

MTR FL 46 75 - 140
MTR FL 76 100

3 Winding

MTR FL 46 06 (*) - 13
(*) winding 06 for MTR FL 46.75 only
MTR FL 76 14

4 Feedback

H1 Hall Sensor
E1 Incremental encoder ABZ - 3584 cpr

5 Connection

D0 - cable output with connectors

MOTOROLLER Power Pack - gearless motoroller with tube

MTR PP	76	100	14	H1	D0	01	-	80	-	XXX
Model	Size	Winding	Feedback	Connection	Fixed shaft	Tube type	Tube length	Indle shaft	Optional	
1	2	3	4	5	6	7	8	9	10	

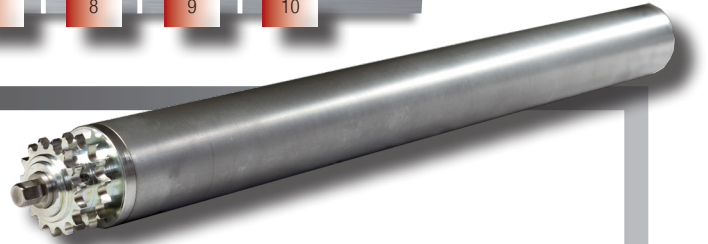


1	Model	MTR PP 46 MTR PP 60 MTR PP 76	
2	Size	MTR PP 46	75 - 140
		MTR PP 60	150
		MTR PP 76	100
3	Winding	MTR PP 46	06 (*) - 13 <small>(*) winding 06 for MTR PP 46.75 only</small>
		MTR PP 60	21
		MTR PP 76	14
4	Feedback	H1 Hall Sensor E1 Incremental encoder ABZ - 3584 cpr	
5	Connection	D0 - cable output with connectors	
6	Fixed shaft	01 - Male tread	
7	Tube type(*)	01 - Standard tube	02 - Double grooved tube
		03 - Conveyor belt tube	04 - Poly-V pulley tube (**)
		05 - Double grooved pulley tube	06 - Tapered sleeves tube
		07 - Double grooved and tapered sleeves tube	08 - Poly-V and tapered sleeves tube (**)
		09 - Double grooved pulley and tapered sleeves tube	
		<small>(*) for MTR PP 46 only (**) This version is not available for sale in Germany</small>	
8	Tube lenght(*)	Lenght in mm	
		<small>(*) For MTR PP 60 lenght is fixed</small>	
9	Indle shaft(*)	AA: hex spring loaded AB: female thread AC: poly-V hex spring loaded AD: poly-V thread	
		<small>(*) for MTR PP 46 only</small>	

SEE IT BEFORE IT HAPPENS

PALLET CONVEYOR MOTOROLLER Power Pack

MTR PP	89	045	04	H1	D0	01	01	800	AA	XXX
Model		Size	Winding	Feedback	Connection	Fixed shaft	Tube type	Tube length	Indle shaft	Optional
1		2	3	4	5	6	7	8	9	10



1	Model	MTR PP 89	
2	Size	MTR PP 89	045
3	Winding	MTR PP 89	04 - 15
4	Feedback	H1 Hall Sensor	
5	Connection	D0 - cable output with connectors	
6	Fixed shaft	01 - Male tread	
7	Tube type	01 - Standard tube	
8	Tube length	Length in mm	
9	Indle shaft	AA: hex spring loaded AB: female thread	

SEE IT BEFORE IT HAPPENS

DMR 50-5/50 DRIVE TYPE



DMR	50-5/50	E	C	0
Drive Name	Model	Feedback	Fieldbus	Input logic
	1	2	3	4

1	Drive model	50-5/50
2	Feedback	H = Hall sensor E = Incremental encoder
3	Fieldbus	C = CANopen
4	Input Logic	0 = PNP input 1 = NPN input

DMR 76-10/65 DRIVE TYPE



DMR	76-10/65	E	P
Drive Name	Model	Feedback	Fieldbus
	1	2	3

1	Drive model	76-10/65
2	Feedback	H = Hall sensor E = Incremental encoder
3	Fieldbus	P = Profibus

LITE PRO DRIVE TYPE



LPRO	E	40	C
Drive Name	Feedback	Model	Fieldbus
	1	2	3

1	Feedback	E = Hall sensor and encoder
2	Model (output current) Arms	40 = 8/24
3	Fieldbus	C = CANopen

MOTOROLLER 46 RATINGS AND SPECIFICATIONS

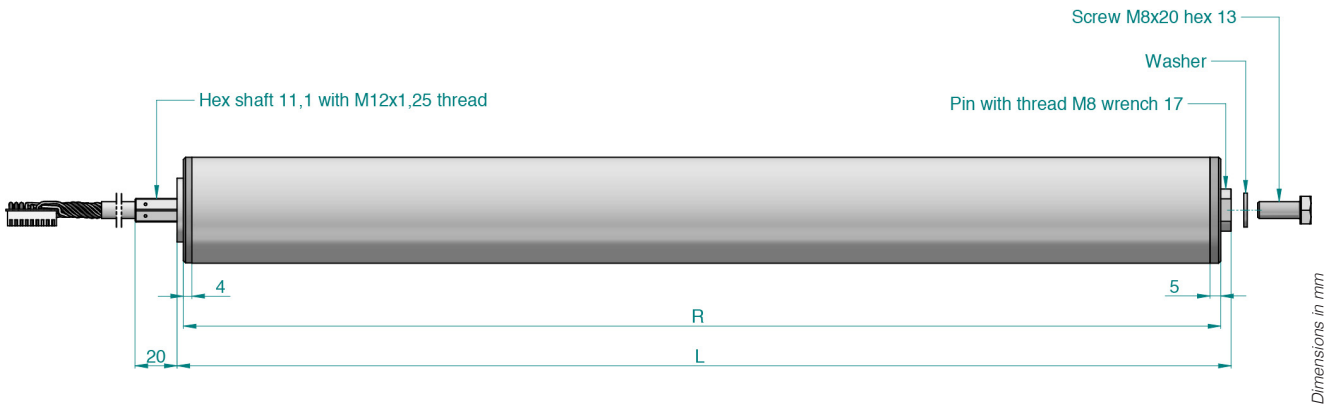
TIME RATING	Continuous	AMBIENT TEMPERATURE	0 to 40 °C
INSULATION CLASS	F	AMBIENT HUMIDITY	5 to 85% (non-condensing)
ENCLOSURE	Totally enclosed. Self-cooled	POLES	28
THERMAL PROTECTION	NTC	INSULATION SYSTEM UL /CSA	cURus , DV155J File nr.:E216686
CE certified			

Motoroller 46 75 06 Motoroller 46 75 13 Motoroller 46 140 13

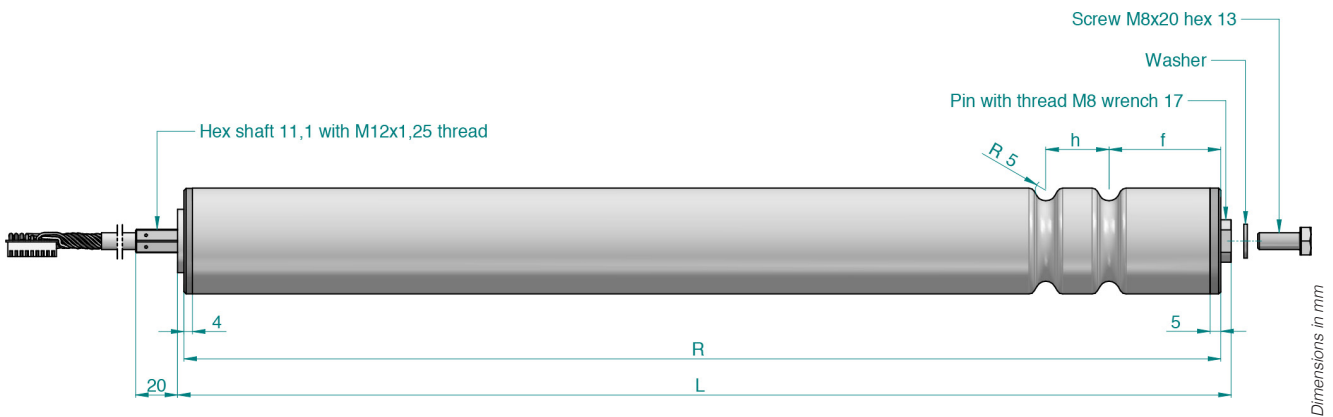
Stall torque	Cn0	Nm	0,74	0,74	1,5
Peak torque	Cpk	Nm	2,2	2,2	4,5
Rated torque	Cn	Nm	0,6	0,6	1,35
Rated working speed	nM	rpm	800	800	800
Rated voltage	Un	Vdc	24	48	48
Maximum working speed @ 24Vdc	nmax	rpm	1000	500	500
Maximum working speed @ 48Vdc	nmax	rpm	1150	1150	1000
Rated output power	Pn	W	50	50	115
Stall current	In0	Arms	3,3	1,63	3,3
Peak current	lpk	Arms	11	5,71	10,61
Rated current	In	Arms	2,7	1,33	3
Torque constant ±10%	Kt	Nm/Arms	0,22	0,45	0,45
Voltage constant ±10%	Ke	Vrsm/Krpm	13,6	27,6	27,6
Phase/phase resistance ±10% @25°C	Rff	Ohm	0,77	2,64	1,23
Phase/phase resistance ±10% @25°C	Lff	mH	1,35	5,4	2,81
Electrical time constant	Te	ms	1,75	2	2,3
Rotor inertia	Jm	Kg cm ²	5	5	6,1
Motor weight	m	Kg	1,96	1,96	2,73
Axial shaft load @800 rpm	Fa	N		110	
Radial shaft load @800 rpm	Fr	N		220 (applied on the rotor's centering)	

MOTOROLLER 46 POWER PACK TUBE TYPE

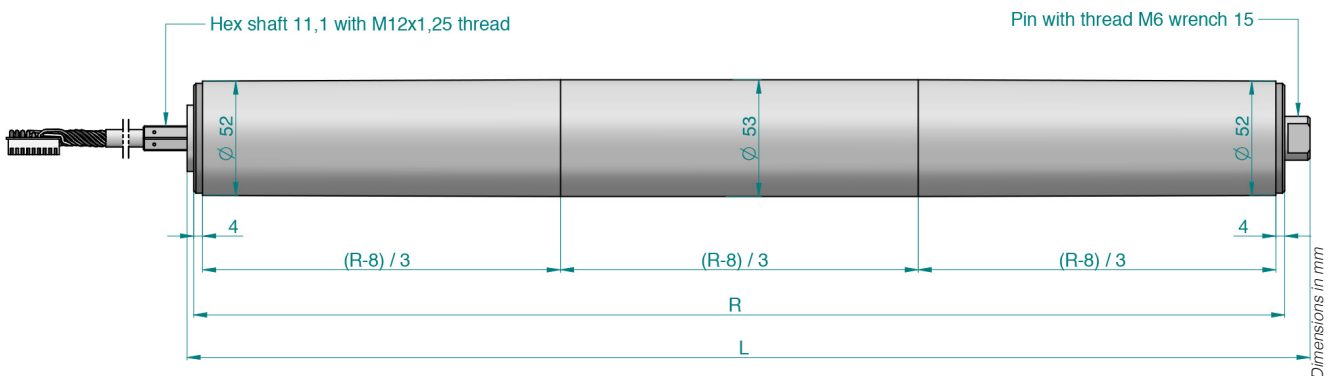
Motoroller 46 standard tube 01



Motoroller 46 double grooved tube 02

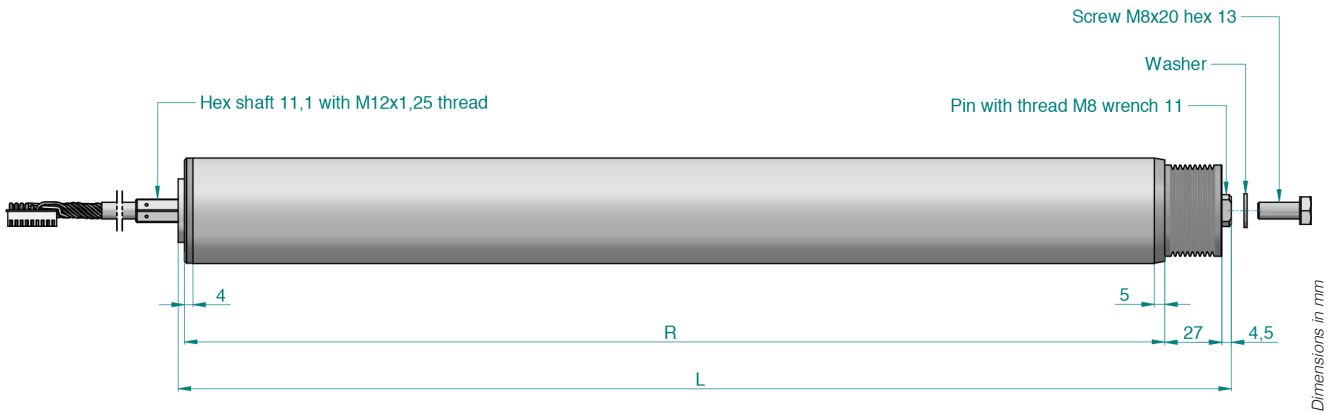


Motoroller 46 conveyor belt tube 03



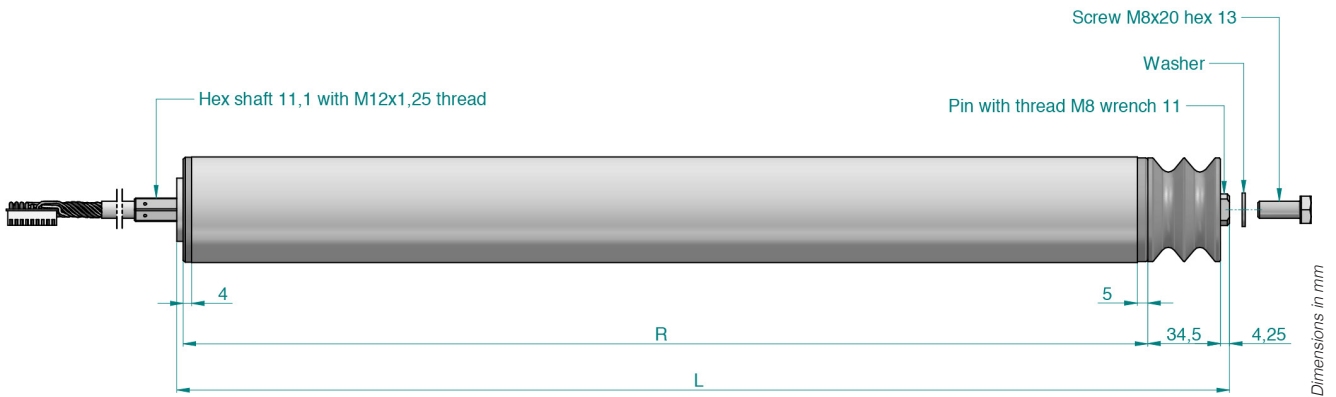
MOTOROLLER 46 POWER PACK TUBE TYPE

Motoroller 46 poly-V pulley tube 04 ^(**)

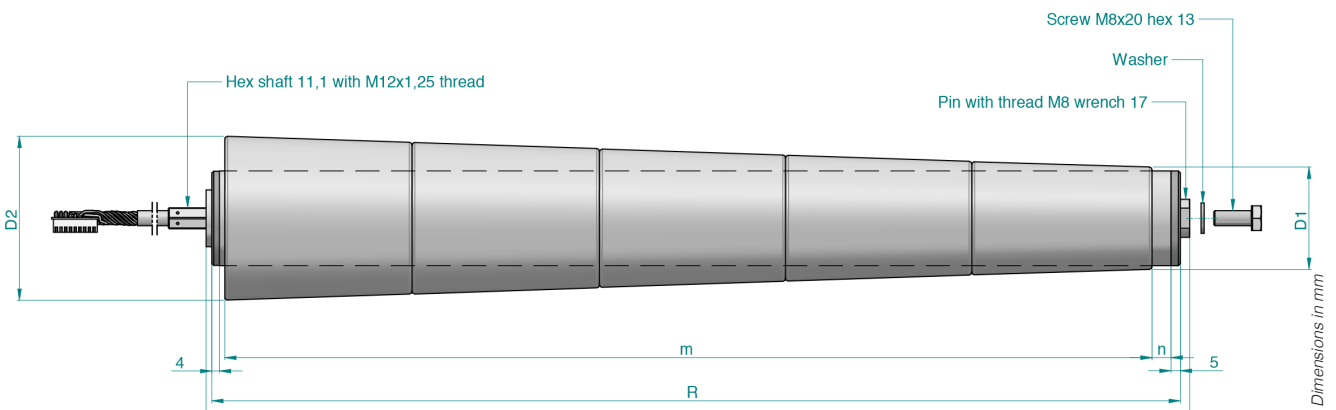


(**) This version is not available for sale in Germany

Motoroller 46 double grooved pulley tube 05

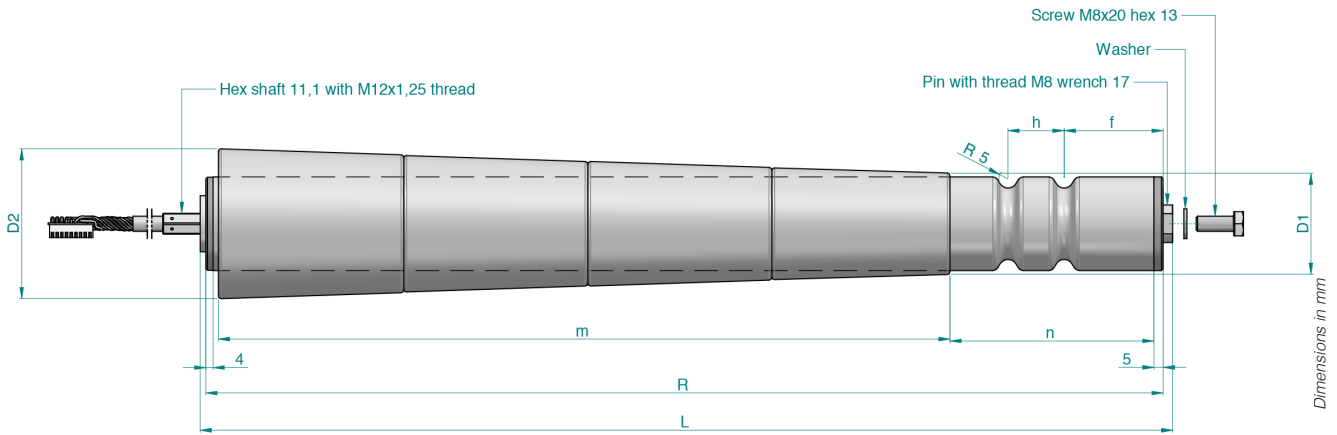


Motoroller 46 tapered sleeves tube 06

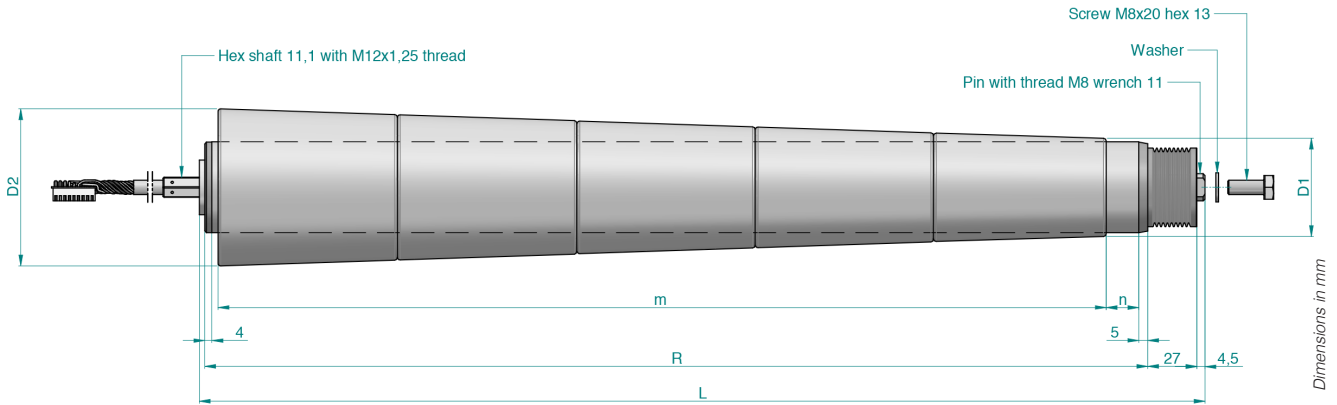


MOTOROLLER 46 POWER PACK TUBE VERSIONS

Motoroller 46 double grooved and tapered sleeves tube 07

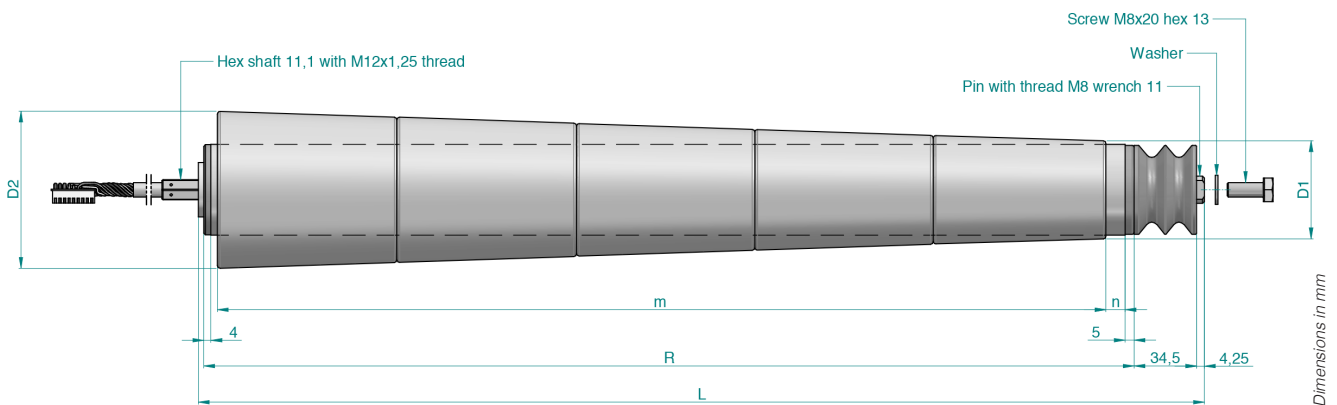


Motoroller 46 poly-V pulley and tapered sleeves tube 08 (**)



(**) This version is not available for sale in Germany

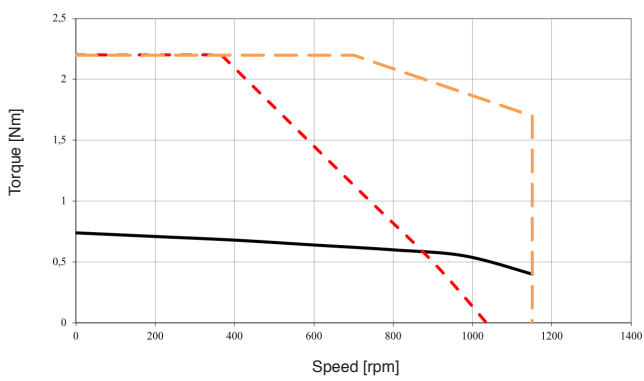
Motoroller 46 double grooved pulley and tapered sleeves tube 09



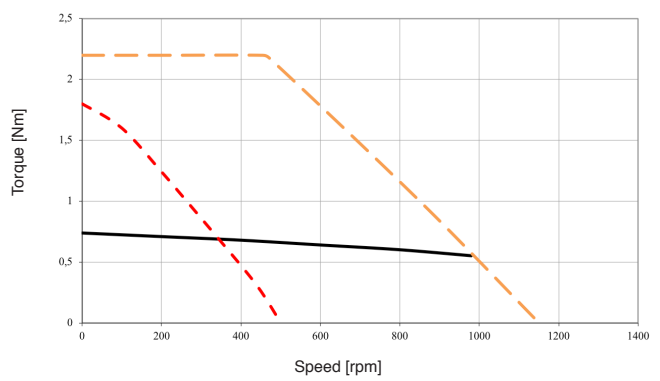
MOTORROLLER 46 TORQUE /SPEED CHARTS



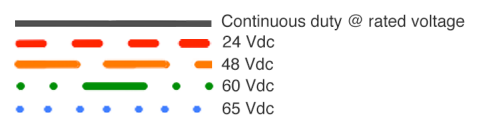
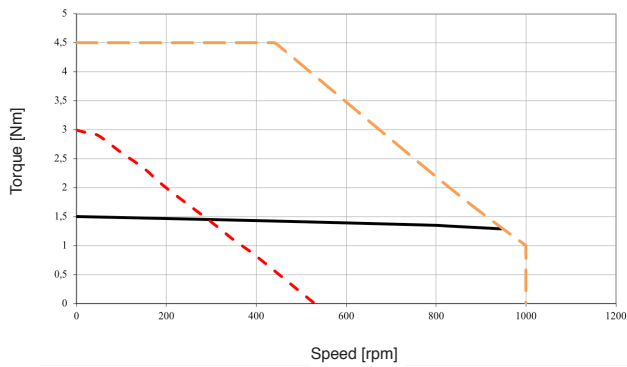
MOTORROLLER 46 75 06



MOTORROLLER 46 75 13



MOTORROLLER 46 140 13



MOTOROLLER 60 RATINGS AND SPECIFICATIONS

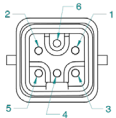
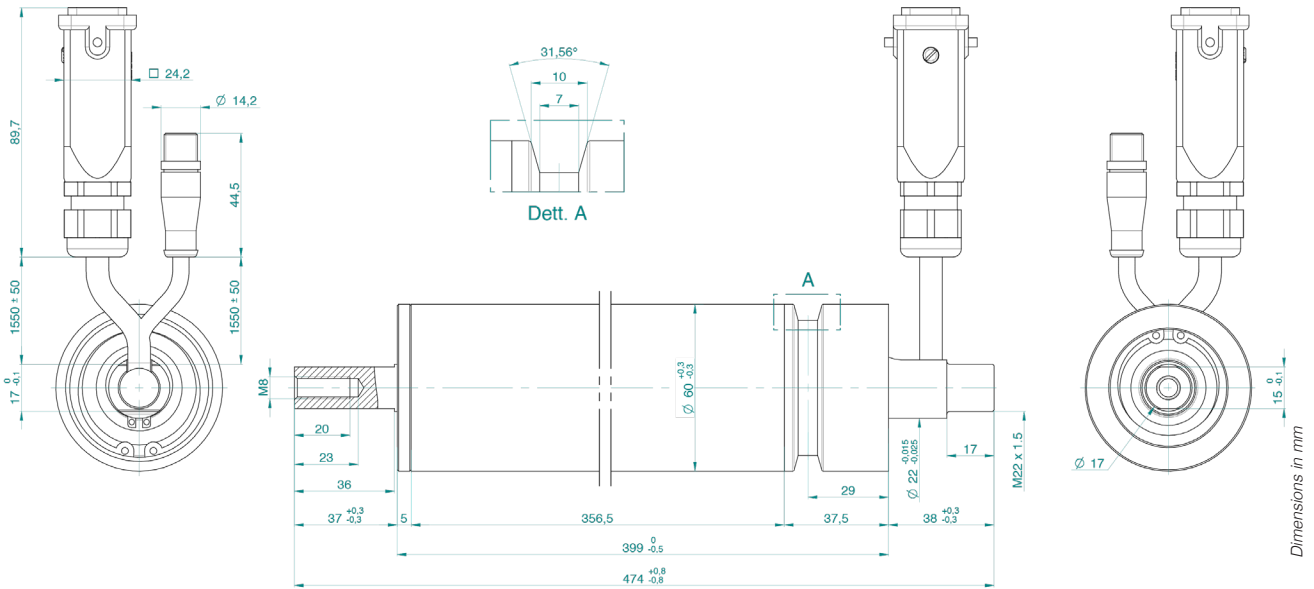
TIME RATING	Continuous	AMBIENT TEMPERATURE	0 to 40 °C
INSULATION CLASS	F	AMBIENT HUMIDITY	5 to 85% (non-condensing)
ENCLOSURE	Totally enclosed. Self-cooled	POLES	28
THERMAL PROTECTION	NTC	INSULATION SYSTEM UL /CSA	cURus , DV155J File nr.:E216686
CE certified			

Motoroller 60 150 21

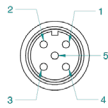
Stall torque	Cn0	Nm	3,2
Peak torque	Cpk	Nm	10
Rated torque	Cn	Nm	2,8
Rated working speed	nM	rpm	800
Rated voltage	Un	Vdc	60
Maximum working speed @ 60Vdc	nmax	rpm	1200
Rated output power	Pn	W	235
Stall current	In0	Arms	6,1
Peak current	lpk	Arms	23
Rated current	In	Arms	5,2
Torque constant ±10%	Kt	Nm/Arms	0,53
Voltage constant ±10%	Ke	Vrsm/Krpm	31,8
Phase/phase resistance ±10% @25°C	Rff	Ohm	0,5
Phase/phase resistance ±10% @25°C	Lff	mH	1,8
Electrical time constant	Te	ms	3,6
Rotor inertia	Jm	Kg cm ²	16,8
Motor weight	m	Kg	5,3
Axial shaft load @800 rpm	Fa	N	140
Radial shaft load @800 rpm	Fr	N	600 (applied on the rotor's centering)

MOTOROLLER 60 POWER PACK DIMENSIONS

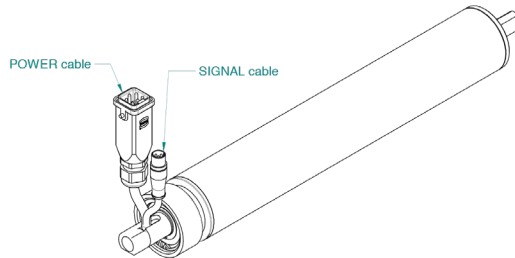
Motoroller 60 150



POWER CONNECTOR
HAN Q/0-M-C 6p MS
 1 = PHASE U
 2 = PHASE V
 3 = PHASE W
 4 = -
 5 = -
 6 = PE



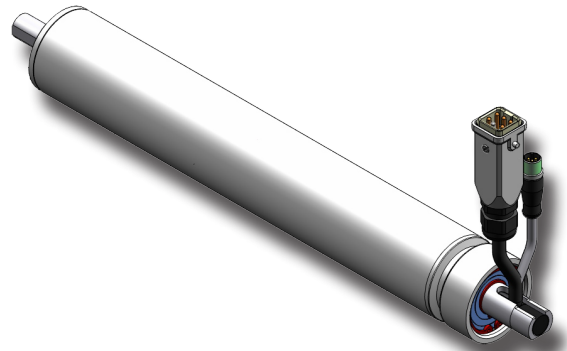
SIGNAL CONNECTOR
M12 5p MS
 1 = HALL U
 2 = HALL V
 3 = HALL W
 4 = 5/12 VDC
 5 = GND



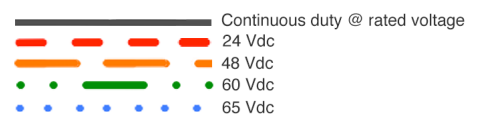
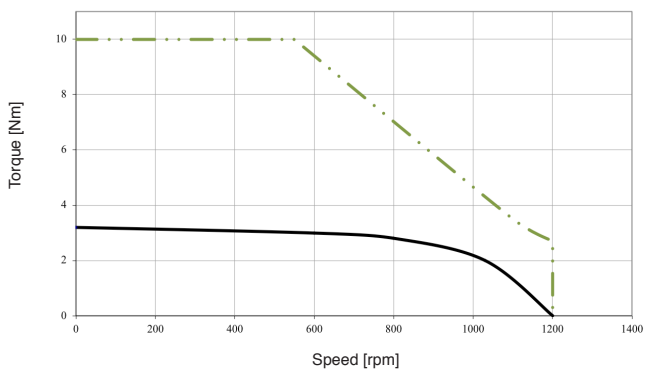
SEE IT BEFORE IT HAPPENS

**MOTOR
 POWER**
 COMPANY

MOTOROLLER 60 TORQUE /SPEED CHARTS



MOTOROLLER 60 150 21



SEE IT BEFORE IT HAPPENS



MOTOROLLER 76 RATINGS AND SPECIFICATIONS

TIME RATING	Continuous	AMBIENT TEMPERATURE	0 to 40 °C
INSULATION CLASS	F	AMBIENT HUMIDITY	5 to 85% (non-condensing)
ENCLOSURE	Totally enclosed. Self-cooled	POLES	28
THERMAL PROTECTION	NTC	INSULATION SYSTEM UL /CSA	cURus , DV155J File nr.:E216686
CE certified			

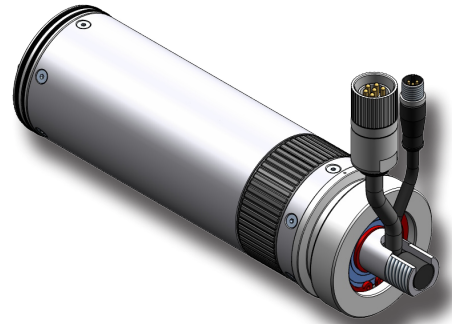
Motoroller 76 100 14

Stall torque	Cn0	Nm	3,6
Peak torque	Cpk	Nm	22
Rated torque	Cn	Nm	3,1
Rated working speed	nM	rpm	800
Rated voltage	Un	Vdc	60
Maximum working speed @ 48Vdc	nmax	rpm	800
Maximum working speed @ 65Vdc	nmax	rpm	1000
Rated output power	Pn	W	260
Stall current	In0	Arms	6,1
Peak current	lpk	Arms	41
Rated current	In	Arms	5,2
Torque constant ±10%	Kt	Nm/Arms	0,59
Voltage constant ±10%	Ke	Vrsm/Krpm	36
Phase/phase resistance ±10% @25°C	Rff	Ohm	0,51
Phase/phase resistance ±10% @25°C	Lff	mH	0,7
Electrical time constant	Te	ms	1,37
Rotor inertia	Jm	Kg cm ²	23,2
Motor weight	m	Kg	5,1
Axial shaft load @800 rpm	Fa	N	220
Radial shaft load @800 rpm	Fr	N	500 (applied on the rotor's centering)

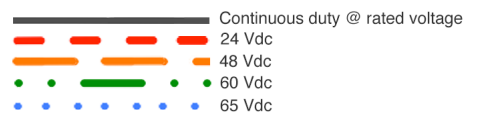
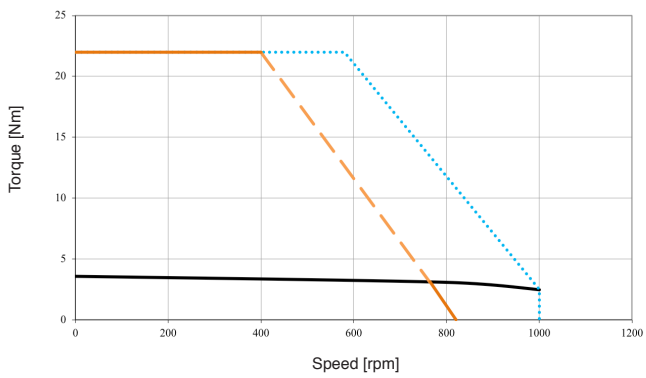
SEE IT BEFORE IT HAPPENS

**MOTOR
POWER**
COMPANY

MOTOROLLER 76 TORQUE /SPEED CHARTS



MOTOROLLER 76 100 14



MOTOROLLER 89 RATINGS AND SPECIFICATIONS

TIME RATING
INSULATION CLASS
ENCLOSURE
THERMAL PROTECTION
CE certified

S3 1'1/2' (Ton = 1' / Toff = 2')
F
Totally enclosed. Self-cooled
PT1000

AMBIENT TEMPERATURE
AMBIENT HUMIDITY
POLES
INSULATION SYSTEM UL /CSA

0 to 40 °C
5 to 85% (non-condensing)
8
cURus , DV155J File nr.:E216686

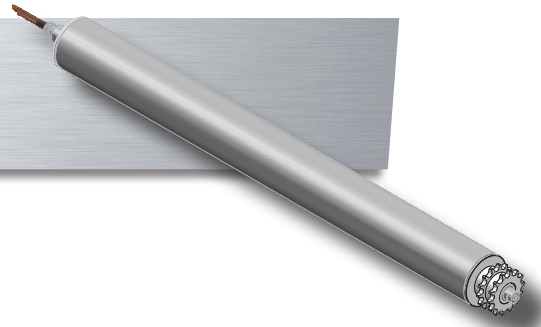
Motoroller 89 045 04

Motoroller 89 045 15

Stall torque*	Cn0	Nm	73	73
Peak torque**	Cpk	Nm	120	120
Rated torque *	Cn	Nm	43	43
Rated working speed		m/s	0,27	0,31
Rated output power	Pn	W	335	355
Rated voltage	Un		48 Vdc	230 Vac
Stall current*	In0	Arms	9,8	2
Peak current	l _{pk}	Arms	16,9	3,5
Rated current*	In	Arms	6,4	1,32
Torque constant ±10%	Kt	Nm/Arms	0,187	0,91
Voltage constant ±10%	Ke	Vrsm/Krpm	11,3	55
Phase/phase resistance ±10% @25°C	Rff	Ohm	0,67	13,3
Phase/phase resistance ±10% @25°C	Lff	mH	2,1	38,5
Electrical time constant	Te	ms	3,1	2,9
Rotor inertia	Jm	Kg cm ²	0,526	0,526
Axial load @80 rpm	Fa	N	240 (applied on the rotor's middle)	240 (applied on the rotor's middle)
Radial shaft load @80 rpm	Fr	N	3800 (applied on the rotor's middle)	3800 (applied on the rotor's middle)

* Rating performances @ 20°C ** Peak torque max duration : 2s

MOTOROLLER 89 DIMENSIONS - type 01

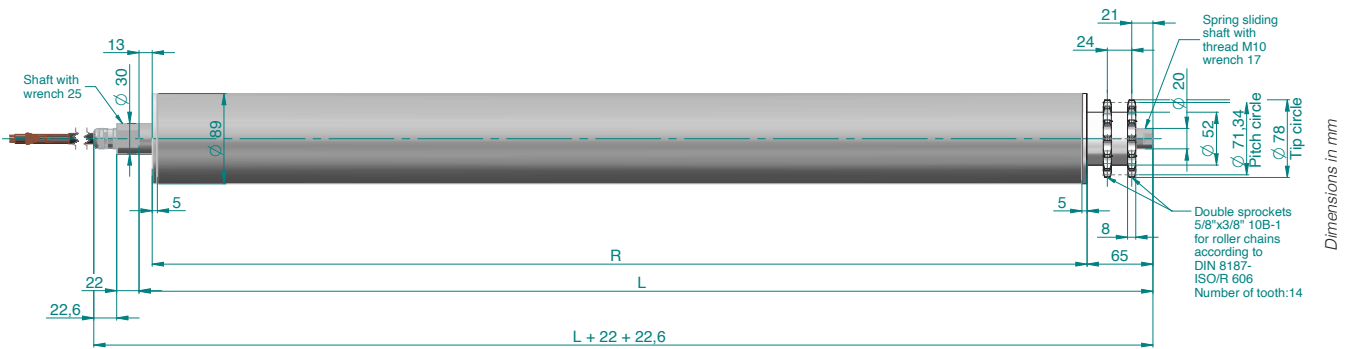


MTR 89 045 - TYPE 01

R	922 mm
L*	1000 mm
Weight	22,5 Kg

*different length available on request

Motoroller 89 045 power back reference drawing 01



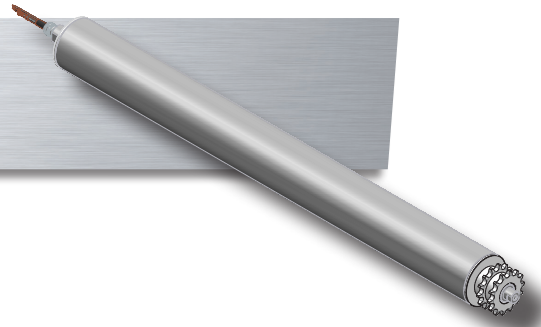
SIGNAL CABLE	
WIRE COLOR	FUNCTION
Green	Hall U
Yellow	Hall U/
Gray	Hall V
Pink	Hall V/
White	Hall W
Brown	Hall W/
Red	+5VCC
Blue	GND
Drain Wire	shield

POWER CABLE	
WIRE COLOR	FUNCTION
White	Phase U
Black	Phase V
Red	Phase W

SEE IT BEFORE IT HAPPENS

**MOTOR
POWER**
COMPANY

MOTOROLLER 89 DIMENSIONS - type 02

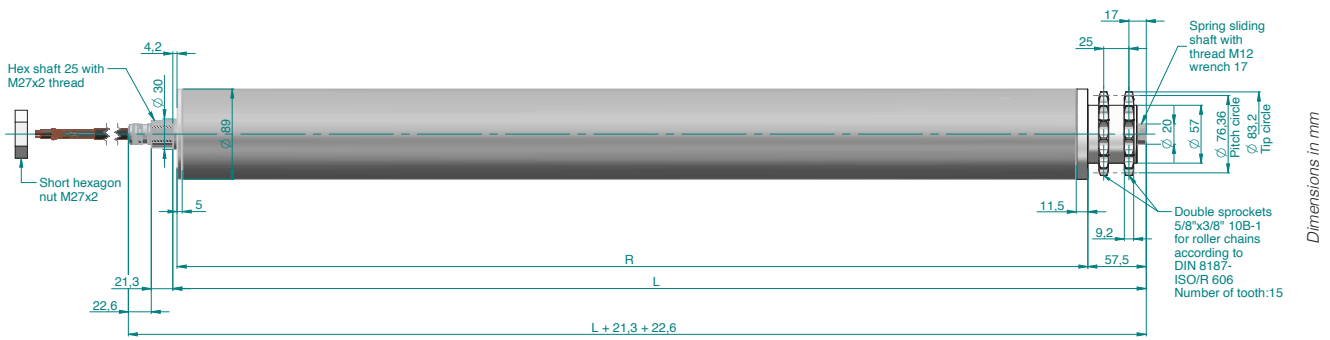


MTR 089 45 - TYPE 02

R 898 mm
 L* 960 mm
 Weight 22,4 Kg

*different length available on request

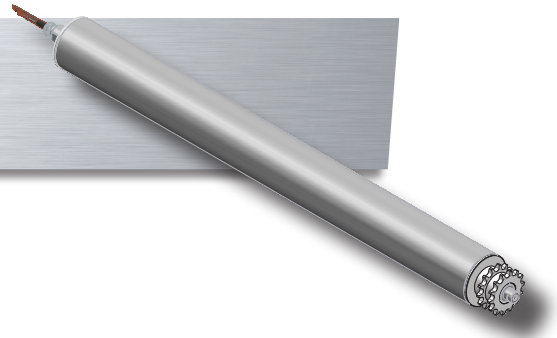
Motoroller 89 045 power back reference drawing 02



SIGNAL CABLE	
WIRE COLOR	FUNCTION
Green	Hall U
Yellow	Hall U/
Gray	Hall V
Pink	Hall V/
White	Hall W
Brown	Hall W/
Red	+5VCC
Blue	GND
Drain Wire	shield

POWER CABLE	
WIRE COLOR	FUNCTION
White	Phase U
Black	Phase V
Red	Phase W

MOTOROLLER 89 DIMENSIONS - type 03

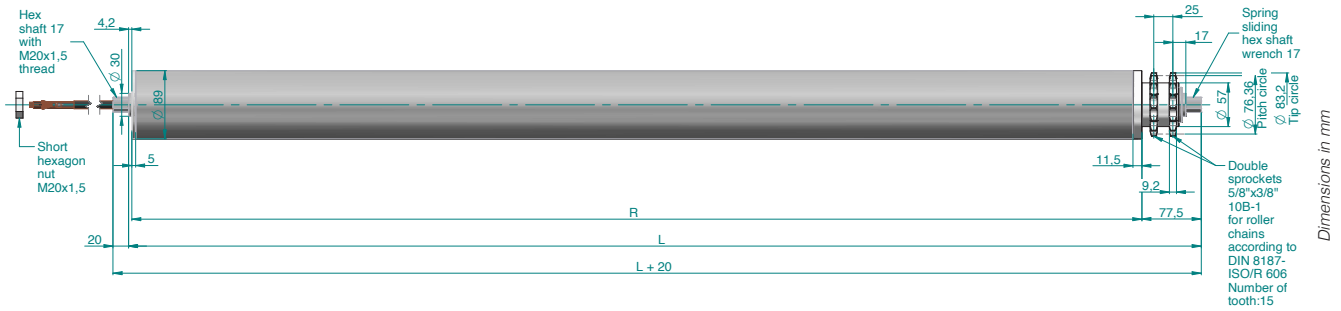


MTR 89 045 - TYPE 03

R 1320 mm
 L* 1400 mm
 Weight 27 Kg

*different length available on request

Motoroller 89 045 power back reference drawing 03



SIGNAL CABLE	
WIRE COLOR	FUNCTION
Green	Hall U
Yellow	Hall U/
Gray	Hall V
Pink	Hall V/
White	Hall W
Brown	Hall W/
Red	+5VCC
Blue	GND
Drain Wire	shield

POWER CABLE	
WIRE COLOR	FUNCTION
White	Phase U
Black	Phase V
Red	Phase W

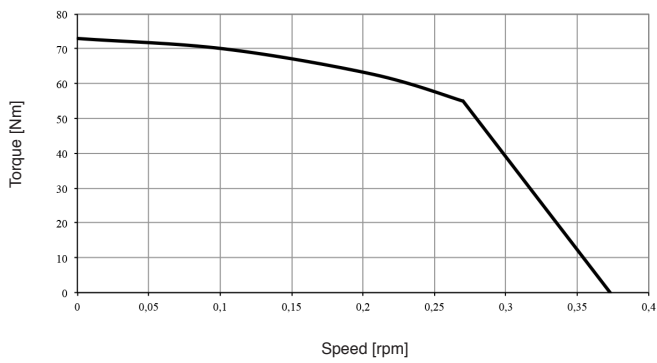
SEE IT BEFORE IT HAPPENS



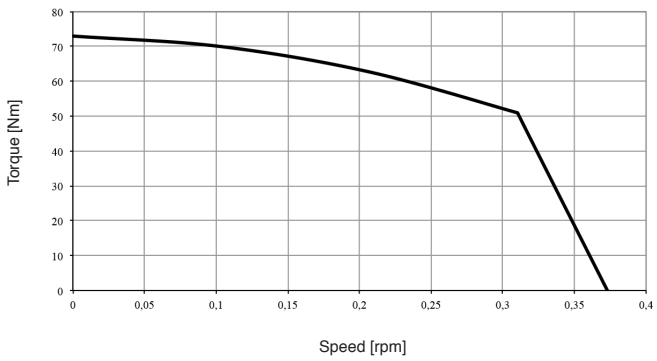
MOTOROLLER 89 045 TORQUE /SPEED CHARTS



MOTOROLLER 89 045 04



MOTOROLLER 89 045 15



SEE IT BEFORE IT HAPPENS



Cn S3 1 1/2' @rated voltage

FEEDBACK FEATURES

H1 HALL SENSOR

Motor size		Motoroller 46 -60- 76
Nominal Voltage	V	5-9 ±5%
Nominal current	mA	100
Electronic type		OPEN COLLECTOR
N° of pulses revolution	ppr	84

E1 INCREMENTAL ENCODER

Motor size		Motoroller 46 -60- 76
Nominal Voltage	Vdc	5-9 ±5%
Nominal current	mA	100
Electronic type		OPEN COLLECTOR
Zero impulse		ONE AT A LAP
N° of pulses revolution	ppr	896
Resolution	cpr	3584