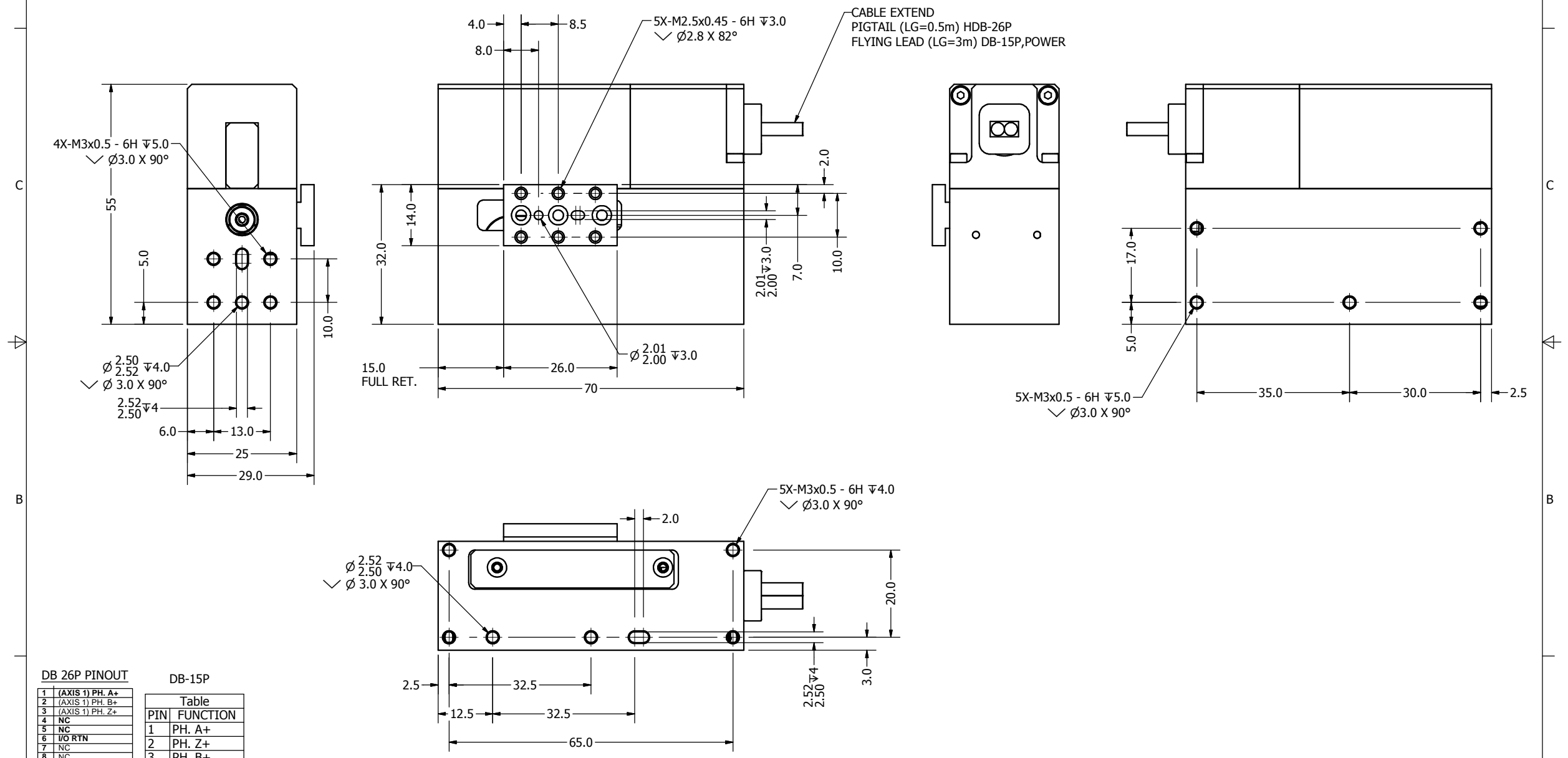


LINEAR SPECIFICATONS:

LINEAR STROKE: 10 +1/-0 mm
 PEAK FORCE: 8 N(24V@1.5A); 12 N(48V@1.5A)
 FORCE CONSTANT: 6 N/A@24V; 8 N/A@48V
 ENCODER RESOLUTION: 20,5,1,0.1 μm
 ENCODER REPEATBILITY: ± 4 ENC. COUNTS
 MOVING MASS: 0.04 kg
 TOTAL MASS: 0.270 kg
 OPERATING TEMPERATURE: 0°C TO 65°C
 ALL DIMENSIONS ARE IN mm

REVISION HISTORY				
REV	DATE	ECN	DESCRIPTION	APPROVED
A2	04/27/2010		PRELIMINARY	TMV



DB 26P PINOUT

1	(AXIS 1) PH. A+
2	(AXIS 1) PH. B+
3	(AXIS 1) PH. Z+
4	NC
5	NC
6	5V RTN
7	NC
8	NC
9	NC
10	(AXIS 1) PH. A-
11	(AXIS 1) PH. B-
12	(AXIS 1) PH. Z-
13	NC
14	NC
15	NC
16	NC
17	NC
18	NC
19	+5VDC
20	5V RTN
21	(AXIS 1) COIL +
22	(AXIS 1) COIL +
23	(AXIS 1) COIL -
24	(AXIS 1) COIL -
25	NC
26	NC

DB-15P

PIN	FUNCTION
1	PH. A+
2	PH. Z+
3	PH. B+
4	+5V
5	NC
6	NC
7	NC
8	NC
9	PH. A-
10	PH. Z-
11	PH. B-
12	5V RTN
13	5V RTN
14	NC
15	NC

POWER

No	Table
1	V RTN
2	+ V
3	COIL +
4	COIL -

TOLERANCES ARE: X ± 0.50 X.X ± 0.1 X.XX ± 0.05 X.XXX ± ANGULARITY ± 0.1° CONCENTRICITY ± 0.01 ROUNDNESS ± 0.05 EDGE BREAK 0.02 MAX CHAMFER 0.03 MAX	MATERIAL:	SMAC		REF. NUMBER
	HEAT TREATMENT:	DESIGNED BY:	DATE:	CHECKED BY:
	NONE	ioanvu	3/26/2010	ioanvu
	MACHINE FINISH:	DRAWN BY:	DATE:	APPROVED BY:
EXCEPT NOTED	ioanvu	3/26/2010	ioanvu	DATE:
PROTECTIVE FINISH:	PART NAME:		SHEET NUMBER:	
3.2/	LCS25-010		1 OF 1	
FILE NAME:	SCALE:	DWG SIZE:	PART NUMBER:	REVISION:
LCS25-010_A2.idw	NONE	C	LCS25-010	A2
SPEC. NUMBER: NONE	DO NOT SCALE DWG			