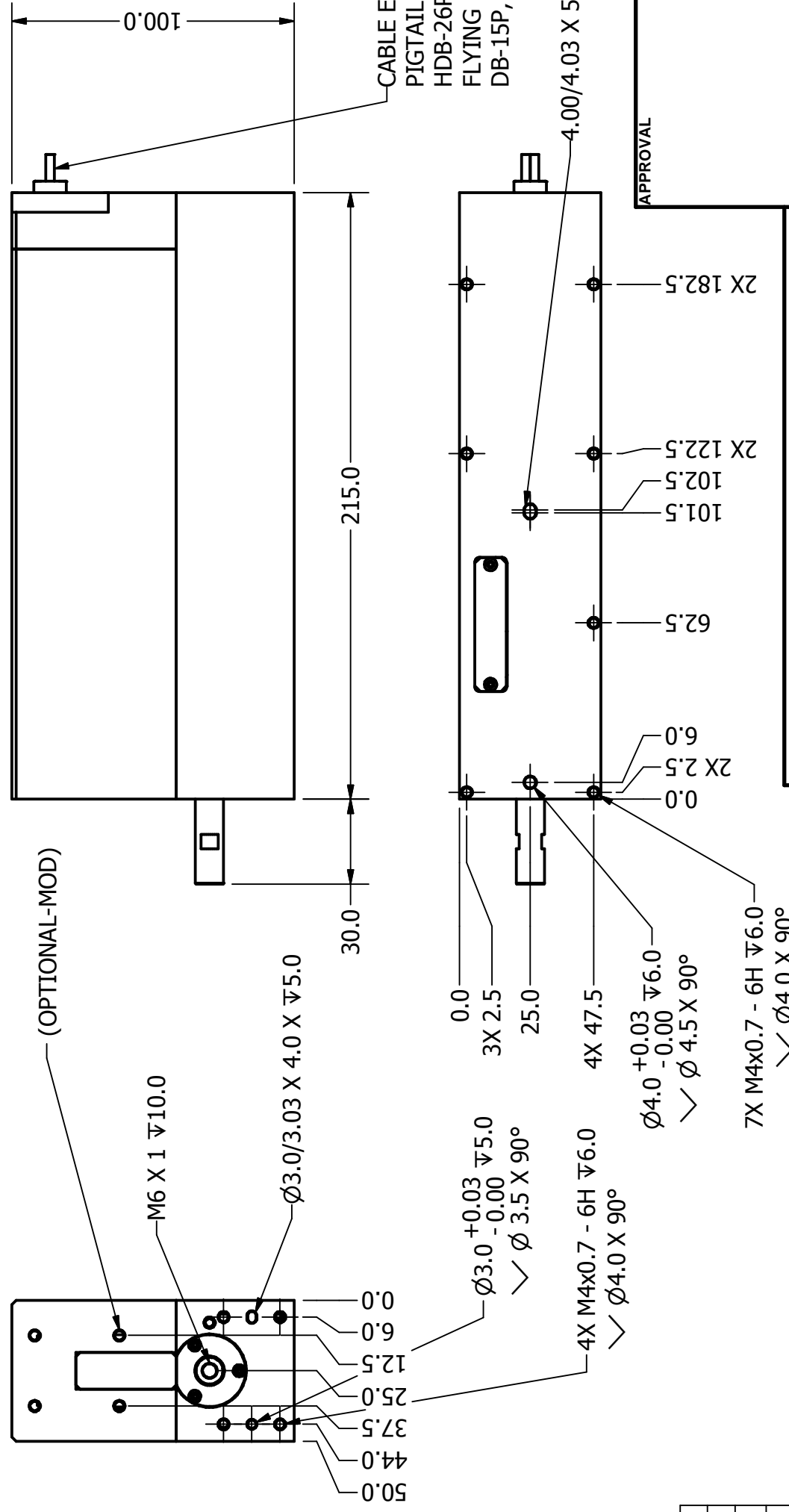


NOTES (UNLESS OTHERWISE SPECIFIED)
 1. ALL DIMENSIONS APPLY AFTER PLATING.
 2. BREAK ALL SHARP EDGES AND REMOVE BURRS.
 3. ALL DIMENSIONS ARE IN mm UNLESS OTHERWISE NOTED.
 4. LINEAR STROKE: 50 +1/-0mm
 5. PEAK FORCE: AVG. 85 N (48V@ 3.0A)
 6. FORCE CONSTANT: AVG. 30N/A@48V
 7. COIL RESISTANCE: 14.3 ohm
 8. INDUCTANCE: 33mH
 9. ENCODER RESOLUTION: 5,1,0.1um
 10. ENCODER REPEATABILITY: ±4 ENC. COUNTS
 11. MOVING MASS: .465 kg
 12. TOTAL MASS: 4.34 kg
 13. OPERATING TEMPERATURE: 0°C TO 65°C



DB 26P PINOUT	PIN	FUNCTION
1	(AXIS 1) PH. A+	
2	(AXIS 1) PH. B+	
3	(AXIS 1) PH. Z+	
4	NC	
5	NC	
6	I/O RTN	
7	NC	
8	NC	
9	NC	
10	(AXIS 1) PH. A-	
11	(AXIS 1) PH. B-	
12	(AXIS 1) PH. Z-	
13	NC	
14	NC	
15	NC	
16	NC	
17	NC	
18	NC	
19	+5VDC	
20	5V RTN	
21	(AXIS 1) COIL +	
22	(AXIS 1) COIL +	
23	(AXIS 1) COIL -	
24	(AXIS 1) COIL -	
25	NC	
26	NC	

DB-15P PINOUT	PIN	DETAIL
1	PH. A+	
2	PH. Z+	
3	PH. B+	
4	+5V	
5	NC	
6	NC	
7	NC	
8	NC	
9	PH. A-	
10	PH. Z-	
11	PH. B-	
12	5V RTN	
13	5V RTN	
14	NC	
15	NC	

POWER	
No	DETAIL
1	V RTN
2	+ V
3	COIL +
4	COIL -

REVISION HISTORY				
REV	DATE	ECN	DESCRIPTION	APPROVED
A	3/2/2011	4785	NEW RELEASE	ORAMAS
B	4/1/2013	5190	ADJUST FORCE	MAC
C	7/21/2014		SHAFT THD	ORAMAS

SIGNATURE NEEDED FOR ORDER APPROVAL
 SIGN: _____ DATE: _____
APPROVAL NOT RECEIVED WITHIN 48 HOURS MAY AFFECT DELIVERY

MATERIAL:		SMAC		REF. NUMBER	LCA 50
HEAT TREATMENT:		DESIGNED BY:	MARK C	CHECKED BY:	
MACHINE FINISH:		DATE:	2/28/2011	DATE:	
EXCEPT NOTED PROTECTIVE FINISH:		DRAWN BY:	MARK C	APPROVED BY:	
TOLERANCES ARE:		DATE:	4/1/2013	DATE:	
X. ± 0.50		CONTRACT:			
X.X ± 0.1		SHEET NUMBER:			
X.XX ± 0.05		1 OF 1			
X.XXX ±		REVISION:			
ANGULARITY ± 0.1°		C			
CONCENTRIC ± 0.01		PART NUMBER:			
ROUNDNESS ± 0.05		LCA50-050-7X-2			
EDGE BREAK 0.02 MAX		DWG SIZE:			
CHAMFER 0.03 MAX		B			
FILE NAME:		DO NOT SCALE DWG			
LCA 50-050-7X-2.idw		SPEC. NUMBER:			

