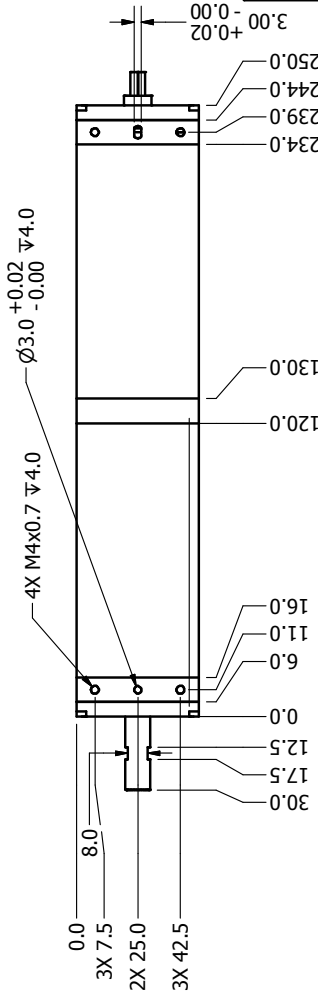
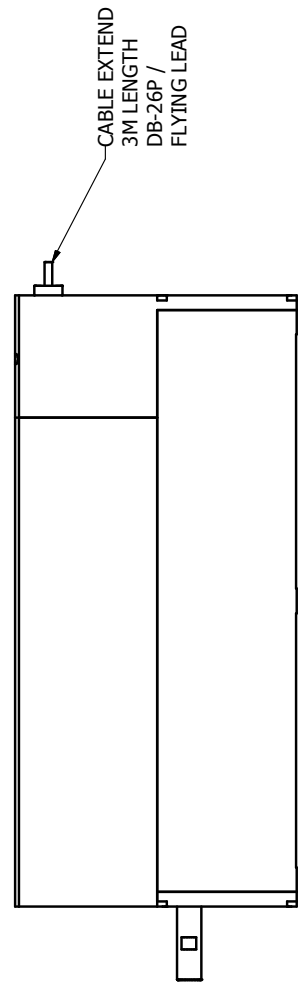


NOTES (UNLESS OTHERWISE SPECIFIED)

1. ALL DIMENSIONS APPLY AFTER PLATING.
2. BREAK ALL SHARP EDGES AND REMOVE BURRS.
3. ALL DIMENSIONS ARE IN mm UNLESS OTHERWISE NOTED.
4. STROKE: 50mm
5. PEAK FORCE: 90N @1.7A (48V)
6. FORCE CONSTANT: 67 N/A
7. ENCODER RESOLUTION: 5,1,0,1
8. MAX CURRENT: 1.7A
9. COIL RESISTANCE: 28 OHM
10. MOVING MASS: 0.665KG

REVISION HISTORY			
REV	DATE	ECN	DESCRIPTION
A	4/28/2011		PROTO
B	10/10/14	5491	NEW PART #



SIGNATURE NEEDED FOR ORDER APPROVAL
 SIGN: _____ DATE: _____
 APPROVAL NOT RECEIVED WITHIN
 48 HOURS MAY AFFECT DELIVERY

TOLERANCES ARE:	X. ± 0.50
X.X ± 0.1	
X.XX ± 0.05	
X.XXX ± 0.1	
ANGULARITY ± 0.1°	
CONCENTRIC ± 0.1	
ROUNDNESS ± 0.05	
EDGE BREAK 0.05 MAX	
CHAMFER 0.03 MAX	
FILE NAME:	LC:450-050-35-6.IDW

POWER	
Column 1	Column 2
1	GND
2	+V
3	U
4	V
5	W
6	NC

DB 15P	
Column 1	Column 2
1	PH. A+
2	PH. Z+
3	PH. B+
4	+5V
5	NC
6	NC
7	NC
8	NC
9	PH. A-
10	PH. Z-
11	PH. B-
12	NC
13	NC
14	NC
15	NC
16	NC
17	NC
18	NC
19	+5VDC
20	5V RTN
21	NC
22	COIL U
23	COIL V
24	COIL W
25	NC
26	NC

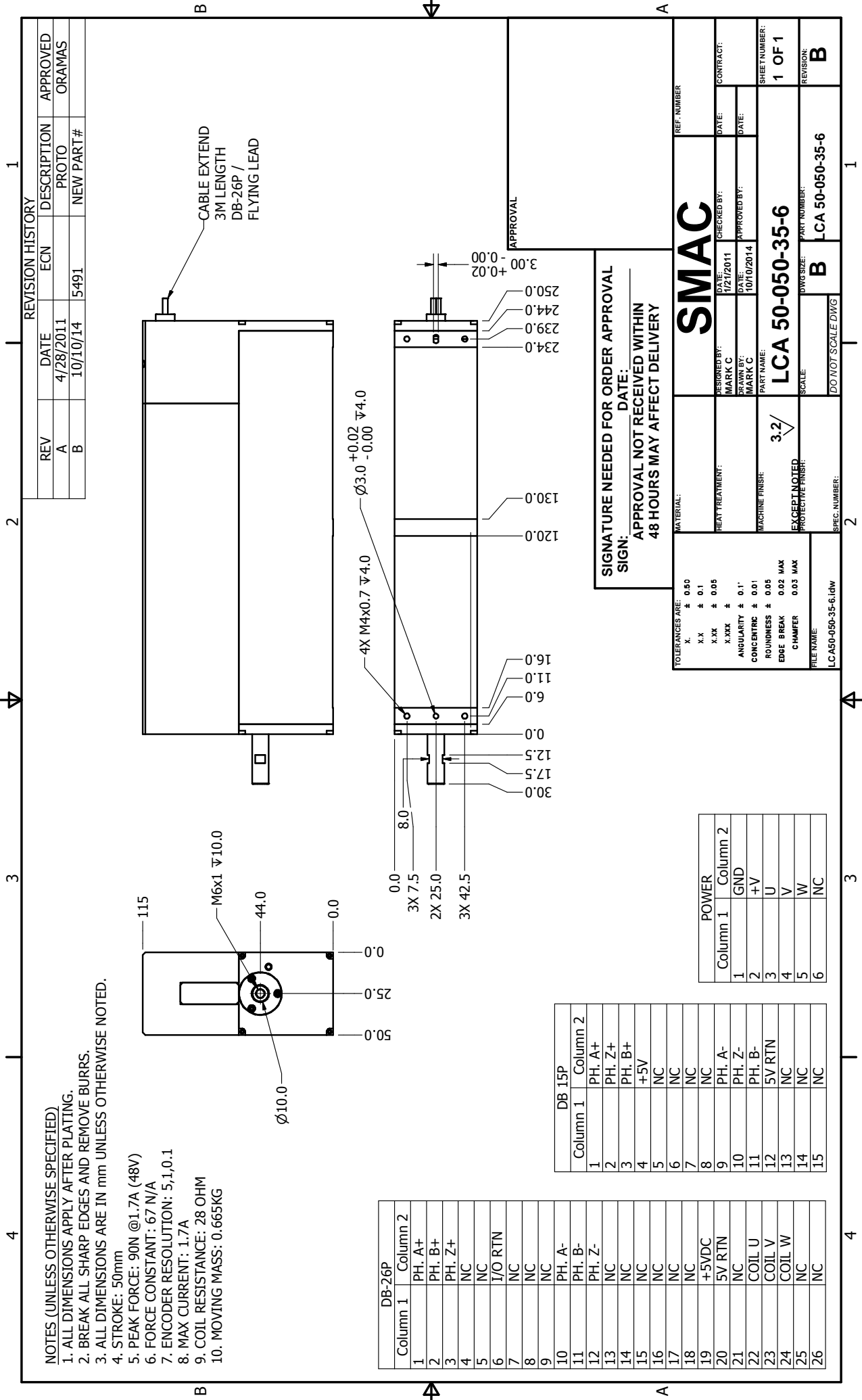
DB-26P	
Column 1	Column 2
1	PH. A+
2	PH. B+
3	PH. Z+
4	NC
5	NC
6	I/O RTN
7	NC
8	NC
9	NC
10	PH. A-
11	PH. B-
12	PH. Z-
13	NC
14	NC
15	NC
16	NC
17	NC
18	NC
19	+5VDC
20	5V RTN
21	NC
22	COIL U
23	COIL V
24	COIL W
25	NC
26	NC

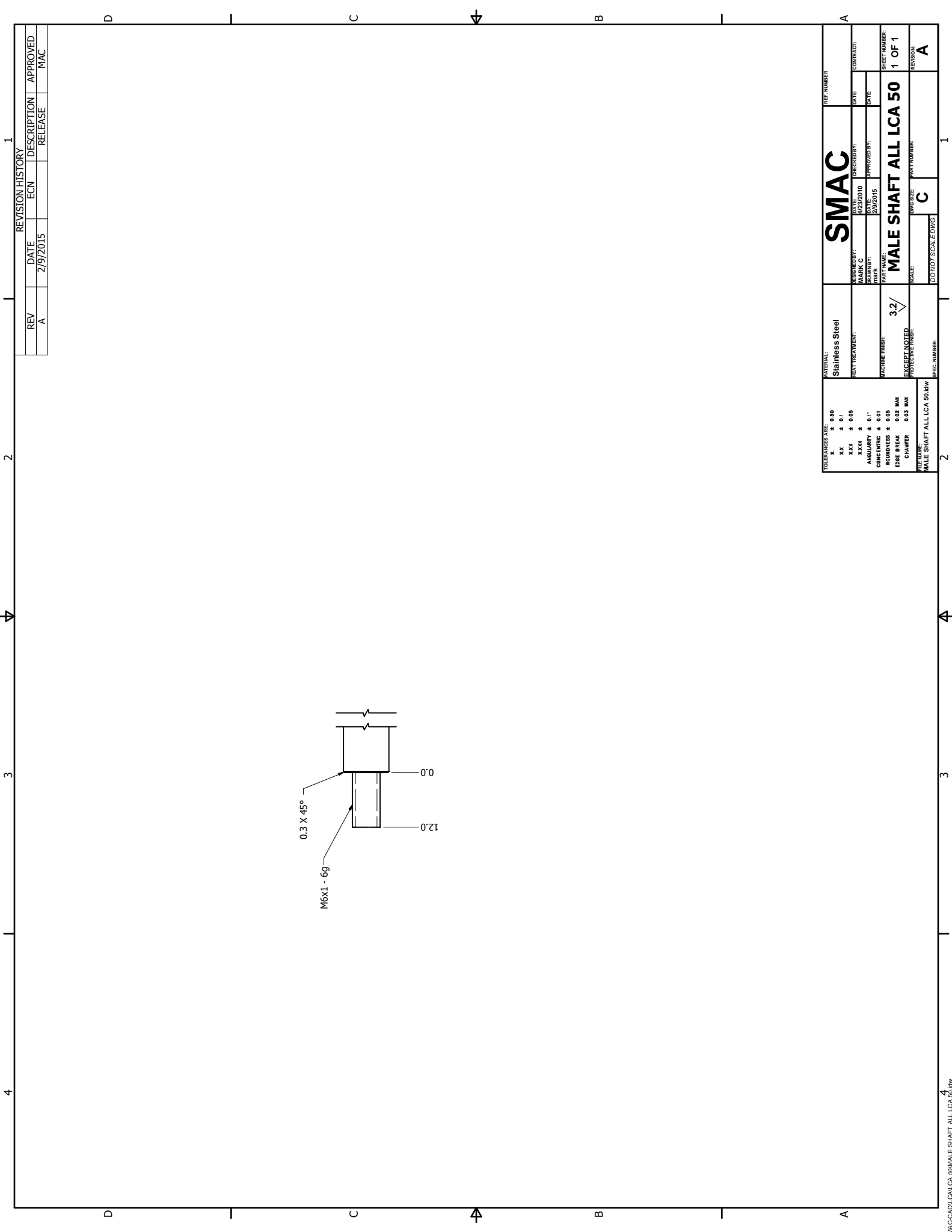
SMAC

DESIGNED BY: _____ DATE: 1/21/2011
 DRAWN BY: MARK C
 CHECKED BY: _____ DATE: _____
 APPROVED BY: _____ DATE: 10/10/2014

PART NAME: LCA 50-050-35-6
 PART NUMBER: LCA 50-050-35-6
 SCALE: 3.2/ B
 DWG SIZE: B
 DO NOT SCALE DWG

EXCEPT NOTED PROTECTIVE FINISH: _____
 SPEC. NUMBER: LCA 50-050-35-6
 REVISION: B





0.3 X 45°

M6x1 - 6g

12.0

0.0

REV	DATE	ECN	DESCRIPTION	APPROVED
A	2/9/2015		RELEASE	MAC

REVISION HISTORY

SMAC DRAWN BY: MASON G CHECKED BY: DATE: 02/26/2010 PART NAME: MALE SHAFT ALL LCA 50 DATE: 2/9/2015 APPROVED BY: DATE: SCALE: DO NOT SCALE DWG PART NUMBER: C SHEET NUMBER: 1 OF 1 REVISION: A		REF. NUMBER CONTRACT:
MATERIAL: Stainless Steel FINISH: EXCEPT NOTED PROTECTIVE FINISH MATCHLINE FINISH: 3.2/	TOLERANCES ARE: F ± 0.00 XX ± 0.1 XXX ± 0.05 ANGLE ± 0.1° CONCENTRIC ± 0.01 ROUNDNESS ± 0.05 EDGE BREAK 0.02 MAX CHAMFER 0.03 MAX TITLE: MALE SHAFT ALL LCA 50.dwg SPEC. NUMBER:	DATE: