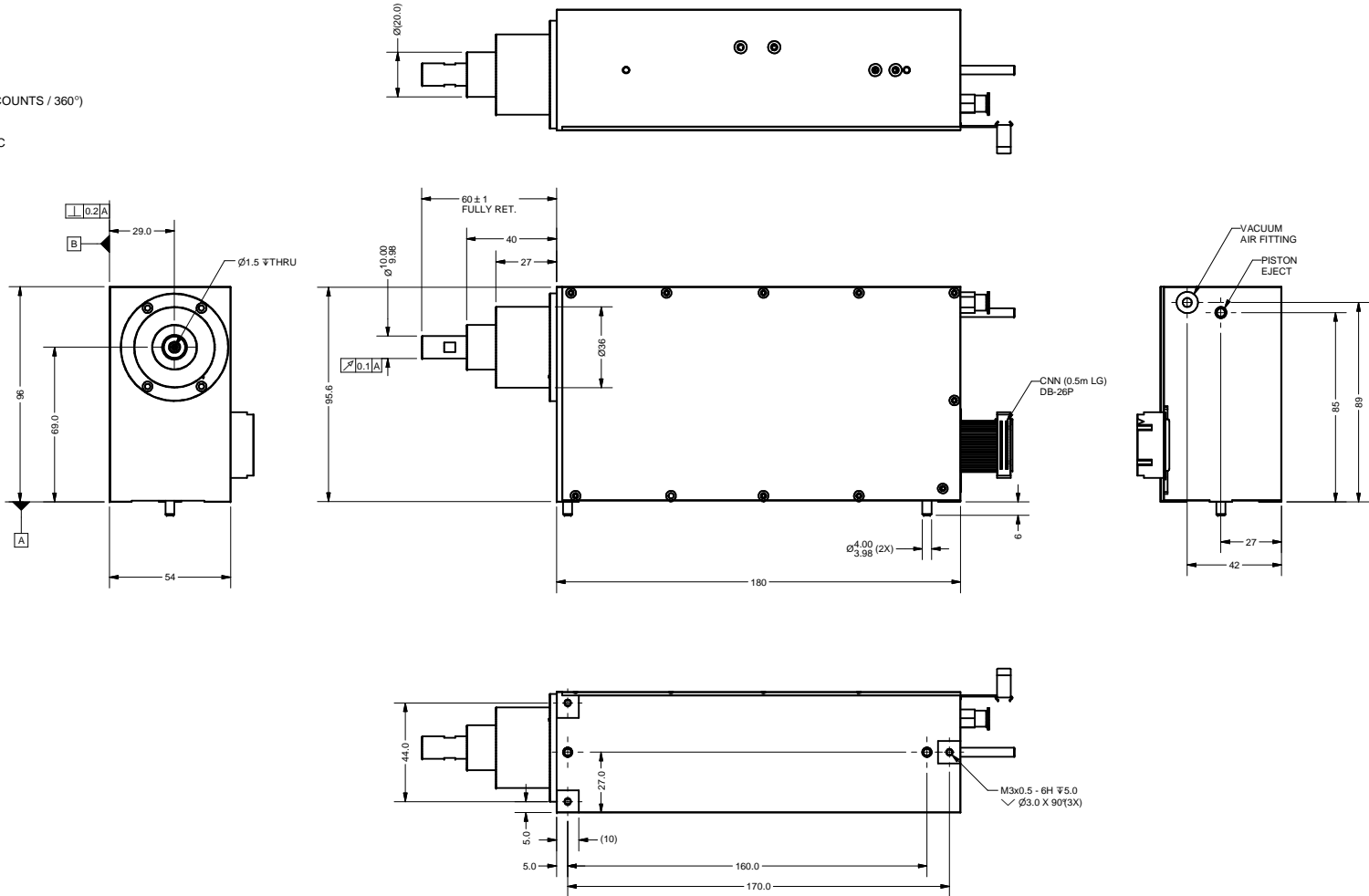


- NOTES: (UNLESS OTHERWISE SPECIFIED)  
 1. ALL DIMENSIONS ARE IN mm UNLESS OTHERWISE NOTED  
 2. LINEAR SPECIFICATIONS:  
 LINEAR STROKE: 58 +1/-0 mm  
 FORCE CONSTANT: 11.5 N / A (48 VDC)  
 PEAK FORCE: 41 N @ 6 A (48 VDC)  
 COIL DC RESISTANCE: 7.8 OHMS ± 5%  
 COIL INDUCTANCE: TBD mH ± 10%  
 ENCODER RESOLUTION: 5.0, 1.0 um  
 ENCODER ACCURACY: ± 5 COUNTS  
 ELECTRICAL POLE PITCH: 30mm  
 3. THETA SPECIFICATION:  
 ROTARY MOTOR: DC BRUSHLESS  
 (DIRECT DRIVE)  
 PEAK TORQUE: 140 mNm @ 3 A  
 TORQUE CONSTANT: 58 mNm / A  
 SUPPLY VOLTAGE: 48 VDC ± 10%  
 ENCODER SUPPLY VOLTAGE: 5 VDC  
 ENCODER RESOLUTION: 0.0088° (40960 COUNTS / 360°)  
 4. MOVING MASS: 0.350 Kg  
 5. TOTAL MASS: 2.1 Kg  
 6. OPERATING TEMPERATURE: 5°C TO +40°C

REVISION HISTORY				
REV	DATE	ECN	DESCRIPTION	APPROVED
A	05/02/2010		PRELIMINARY	TMV



DB-26P			
No	Detail	No	Detail
1	(L) PH. A+	14	NC
2	(L) PH. B+	15	NC
3	(L) PH. Z+	16	(R) PH. B-
4	NC	17	(R) PH. A-
5	NC	18	(R) PH. I-
6	NC	19	+5VDC
7	(R) PH. B+	20	5V RTN
8	(R) PH. A+	21	(R) W
9	(R) PH. I+	22	(L) COIL U
10	(L) PH. A-	23	(L) COIL V
11	(L) PH. B-	24	(L) COIL W
12	(L) PH. Z-	25	(R) V
13	NC	26	(R) U

TOLERANCES ARE: X ± 0.50 X.X ± 0.1 X.XX ± 0.05 X.XXX ± ANGULARITY ± 0.1° CONCENTRICITY ± 0.01 ROUNDNESS ± 0.05 EDGE BREAK 0.02 MAX CHAMFER 0.03 MAX	MATERIAL: ALUMINUM HEAT TREATMENT: MACHINE FINISH: EXCEPT NOTED PROTECTIVE FINISH: BLACK ANODIZE	<b>SMAC</b>		REF. NUMBER PHSS	
		DESIGNED BY: GSRWU DRAWN BY: TOAN VU	DATE: 10/13/2011 DATE: 10/13/2011	CHECKED BY: APPROVED BY:	DATE: DATE:
FILE NAME: LAR51-058-3_B.idw	PART NAME: <b>LAR51-058-3</b>	SCALE: <b>NONE</b>	DWG SIZE: <b>C</b>	PART NUMBER: LAR51-058-3	SHEET NUMBER: <b>1 OF 1</b>
		DO NOT SCALE DWG		REVISION: <b>B</b>	