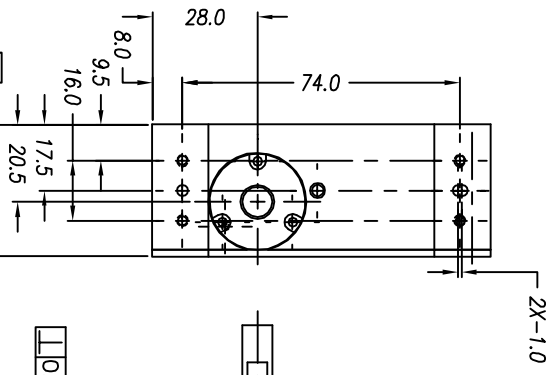


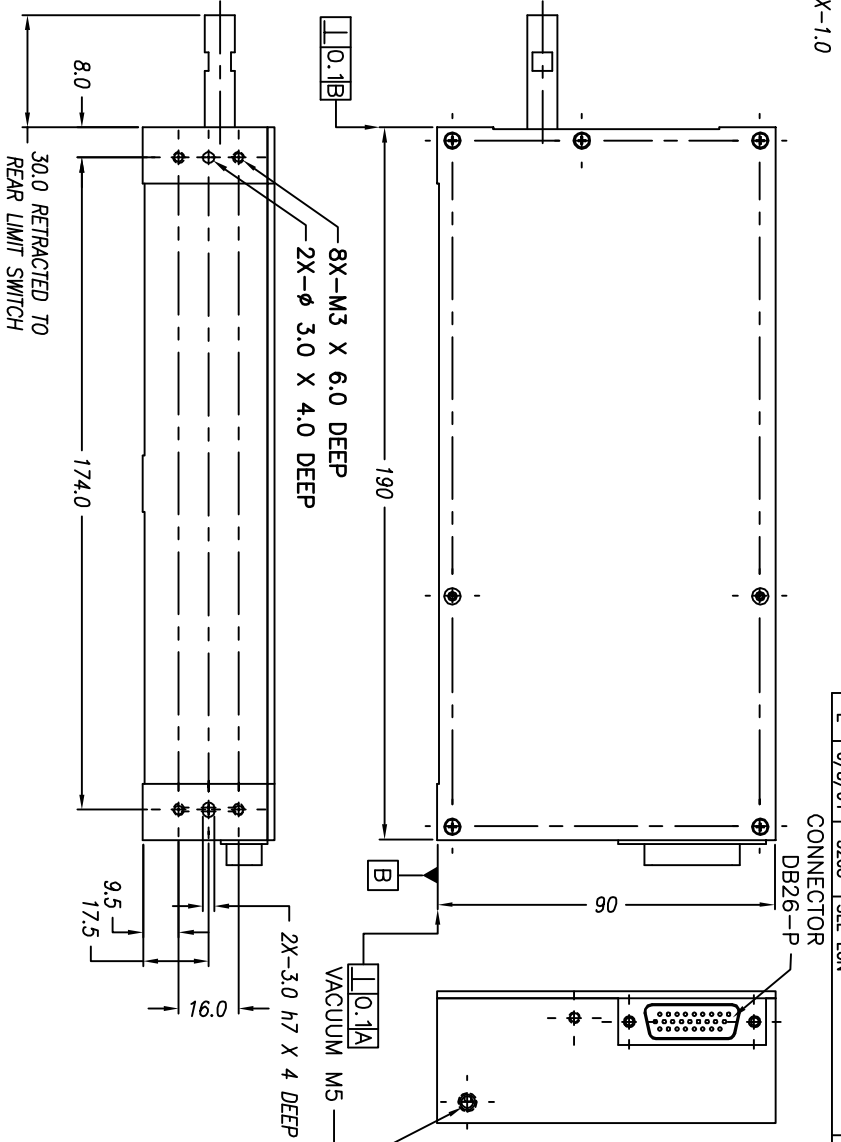
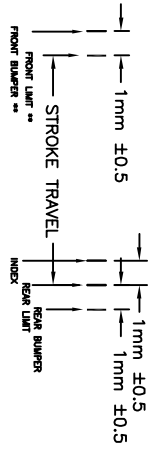
NOTES: (UNLESS OTHERWISE SPECIFIED)

- ALL DIMENSIONS ARE IN MM OTHERWISE NOTED.
- LINEAR SPECIFICATION:
FORCE CONSTANT: 7.5 N/AMP
PEAK FORCE: 10.5 N @ 1.6 AMPS (24 VDC)
CONTINUE FORCE : 7.5 N @ 1.0 AMPS (24 VDC)
COIL DC RESISTANCE: 13.3 OHMS @ 22°C
ENCODER RESOLUTION: 0.5, 1.0, 5.0 Microns
ENCODER ACCURACY: ±4 Microns
- THETA SPECIFICATION: (DIRECT OUTPUT SHAFT)
ROTATION ANGLE: 360°
PEAK TORQUE: 77.8 mN.m (3.4 AMPS , 24 VDC)
CONTINUE TORQUE: 14.1 mN.m @ 0.5 Amp (24 DCV)
MAXIMUM RPM : 5000 (WITH 0 LOAD & VACUUM)
GEAR RATIO: NO (DIRECT DRIVE)
ROTARY MOTOR TYPE: DC BRUSH (2342)
ENCODER RESOLUTION: 20,000 CPR (MAX 50,000)
ENCODER ACCURACY: ±5 COUNTS (ZERO BACK LASH)
- MOVING MASS: 290 GRAMS
- TOTAL MASS: 1350 GRAMS
- OPERATING TEMPERATURE: -10°C TO +65°C



DB-28P ENCODER

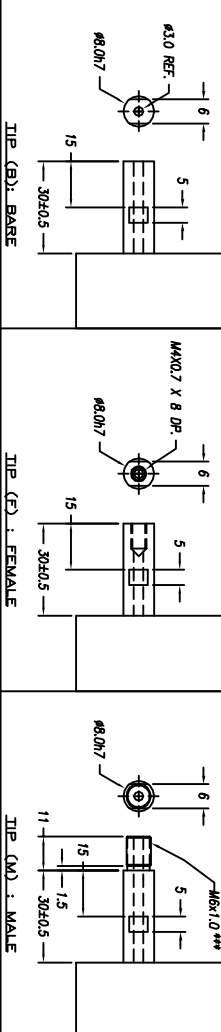
1	(1) PH. A+
2	(1) PH. B+
3	(1) PH. Z+
4	NC
5	NC
6	I/O R/N
7	(8) PH. B+
8	(8) PH. A+
9	(8) PH. I+
10	(1) PH. A-
11	(1) PH. B-
12	(1) PH. Z-
13	NC/R HOME
14	NC/R +
15	NC/R -
16	(8) PH. B-
17	(8) PH. A-
18	(8) PH. I-
19	+5VDC
20	5V R/N
21	(1) COIL +
22	(1) COIL -
23	(1) COIL -
24	(1) COIL -
25	(8) MOTOR +
26	(8) MOTOR -



SIGNATURE NEEDED FOR ORDER APPROVAL	DATE
APPROVAL NOT RECEIVED WITHIN 48 HOURS MAY AFFECT DELIVERY	

REV	DATE	E/CN	DESCRIPTION	APP
F	10/13/04	3354	SEE E/CN ***	CAW
G	1/24/17	5991	SEE E/CN ***	B/C

REV	DATE	E/CN	DESCRIPTION	APP
C	10/7/02	2608	INITIAL RELEASE	T/M
D	4/4/03	2744	SEE E/CN	S/M
E	6/8/04	3208	SEE E/CN **	CAW



TOLERANCES ARE:		MATERIAL: ALUMINUM 6061-T6		REF. NUMBER: LAR35-050	
X	± 0.50	HEAT TREAT:	RC	DESIGNED BY:	TOAN VU
X.X	± 0.1	ANGLE FINISH:	DEEP	DRAWN BY:	S. HOODMAN
X.XX	± 0.05	CONCENTRIC ±	0.01	DATE:	09/08/02
X.XXX	± 0.1*	ROUNDNESS ±	0.05	DATE:	10/07/02
		EDGE BREAK	0.2 MAX	APPROVED BY:	
		CHAMFER	0.2 MAX	DATE:	
FILE NAME:	LAR35-050-5_F	EXCEPT NOTED:	3.2	PART NAME:	LAR35-050-5
		PROTECTIVE FINISH	ELECTROLESS NICKEL	SCALE:	NONE
		SPEC. NUMBER:		DWG. SIZE:	B
				PART NUMBER:	LAR35-050-5
				CONTRACT:	STD
				SHEET NUMBER:	1 OF 1
				REVISION:	G

SMAC