

ALL DIMENSIONS ARE IN mm

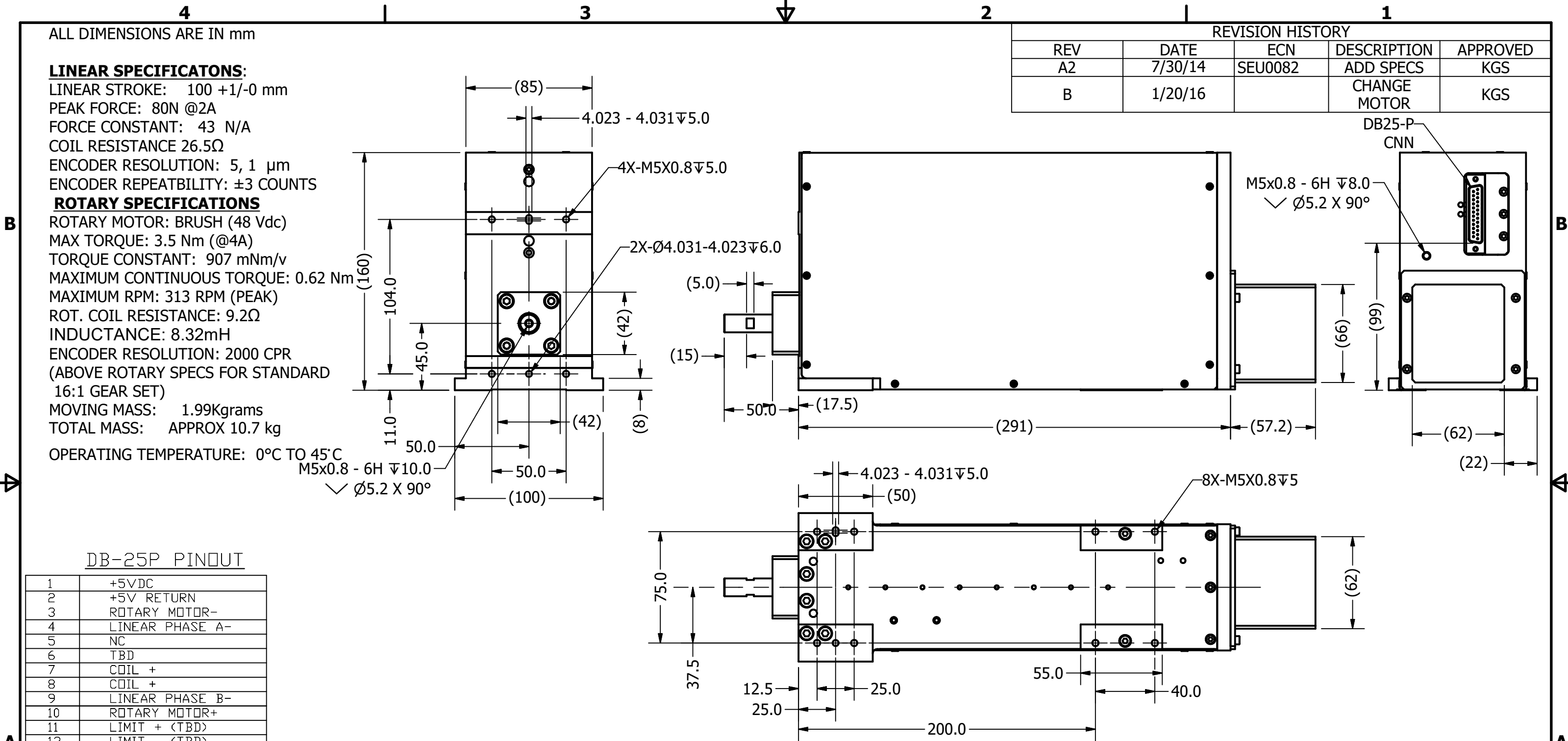
**LINEAR SPECIFICATONS:**

LINEAR STROKE: 100 +1/-0 mm  
 PEAK FORCE: 80N @2A  
 FORCE CONSTANT: 43 N/A  
 COIL RESISTANCE 26.5Ω  
 ENCODER RESOLUTION: 5, 1 μm  
 ENCODER REPEATBILITY: ±3 COUNTS

**ROTARY SPECIFICATIONS**

ROTARY MOTOR: BRUSH (48 Vdc)  
 MAX TORQUE: 3.5 Nm (@4A)  
 TORQUE CONSTANT: 907 mNm/v  
 MAXIMUM CONTINUOUS TORQUE: 0.62 Nm  
 MAXIMUM RPM: 313 RPM (PEAK)  
 ROT. COIL RESISTANCE: 9.2Ω  
 INDUCTANCE: 8.32mH  
 ENCODER RESOLUTION: 2000 CPR  
 (ABOVE ROTARY SPECS FOR STANDARD  
 16:1 GEAR SET)  
 MOVING MASS: 1.99Kgrams  
 TOTAL MASS: APPROX 10.7 kg  
 OPERATING TEMPERATURE: 0°C TO 45°C

REVISION HISTORY				
REV	DATE	ECN	DESCRIPTION	APPROVED
A2	7/30/14	SEU0082	ADD SPECS	KGS
B	1/20/16		CHANGE MOTOR	KGS



DB-25P PINOUT

1	+5VDC
2	+5V RETURN
3	ROTARY MOTOR-
4	LINEAR PHASE A-
5	NC
6	TBD
7	COIL +
8	COIL +
9	LINEAR PHASE B-
10	ROTARY MOTOR+
11	LIMIT + (TBD)
12	LIMIT - (TBD)
13	ROTARY PHASE B-
14	LINEAR PHASE A+
15	ROTARY PHASE A+
16	LINEAR PHASE B+
17	ROTARY PHASE B+
18	LINEAR INDEX +
19	COIL -
20	COIL -
21	ROTARY PHASE A-
22	ROTARY COARSE INDEX
23	LINEAR INDEX -
24	ROTARY FINE INDEX
25	ROTARY FINE INDEX

TOLERANCES ARE: X. ± 0.50 X.X ± 0.1 X.XX ± 0.05 X.XXX ± ANGULARITY ± 0.1° CONCENTRIC ± 0.01 ROUNDNESS ± 0.05 EDGE BREAK 0.02 MAX CHAMFER 0.03 MAX	MATERIAL:	<b>SMAC</b>		REF. NUMBER	
	HEAT TREATMENT:			DESIGNED BY: toanvu	DATE: 2/5/2009
FILE NAME: LAR300-100-7 STD_B.idw	MACHINE FINISH: 3.2/	PART NAME: <b>LAR300-100-75</b>		SHEET NUMBER: 1 OF 1	
	PROTECTIVE FINISH: ELECTROLESS NICKEL	SCALE: <b>NONE</b>	DWG SIZE: <b>B</b>	PART NUMBER: <b>LAR300-100-7</b>	REVISION: <b>B</b>
	SPEC. NUMBER: NONE	DO NOT SCALE DWG			