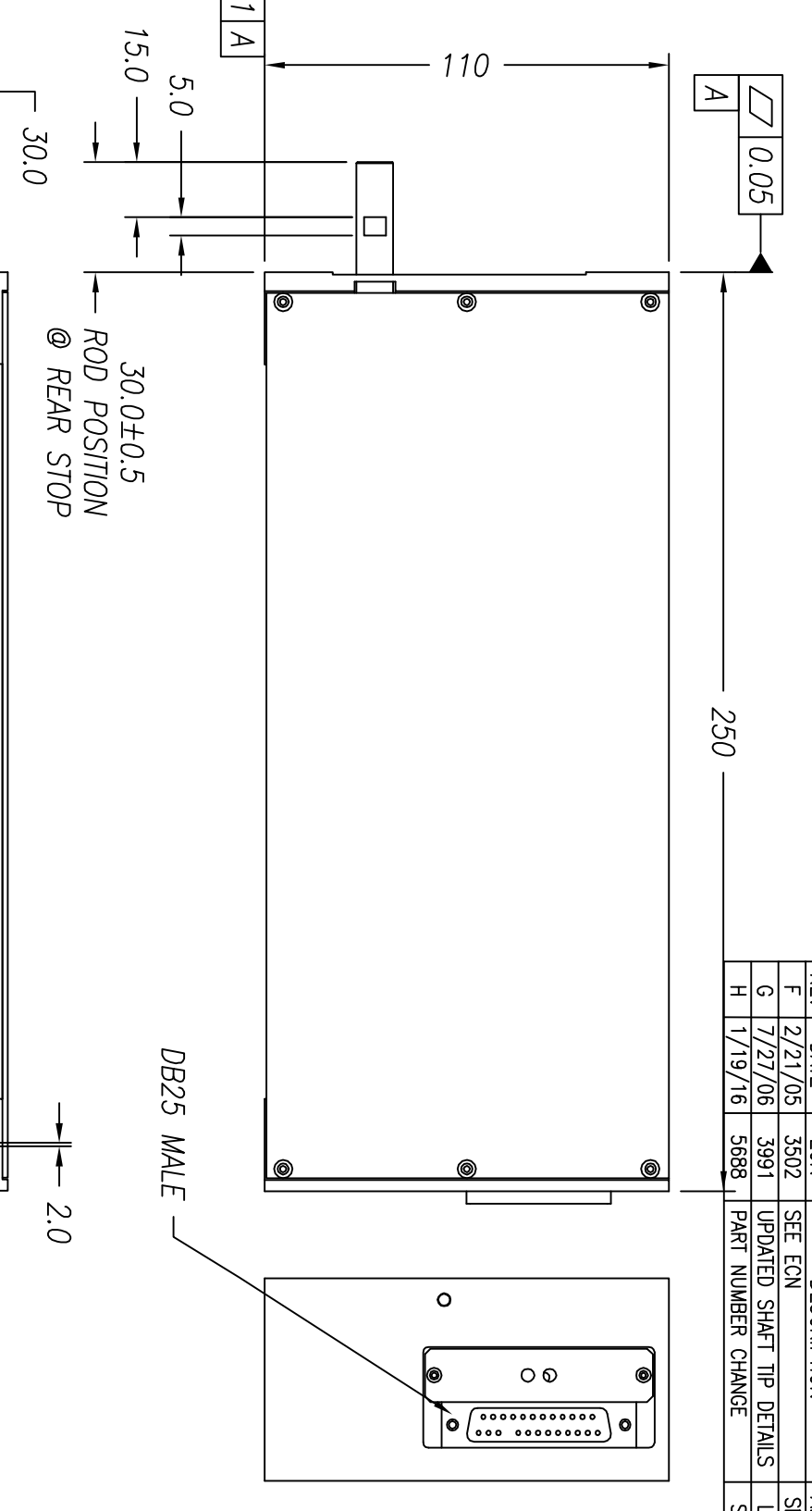
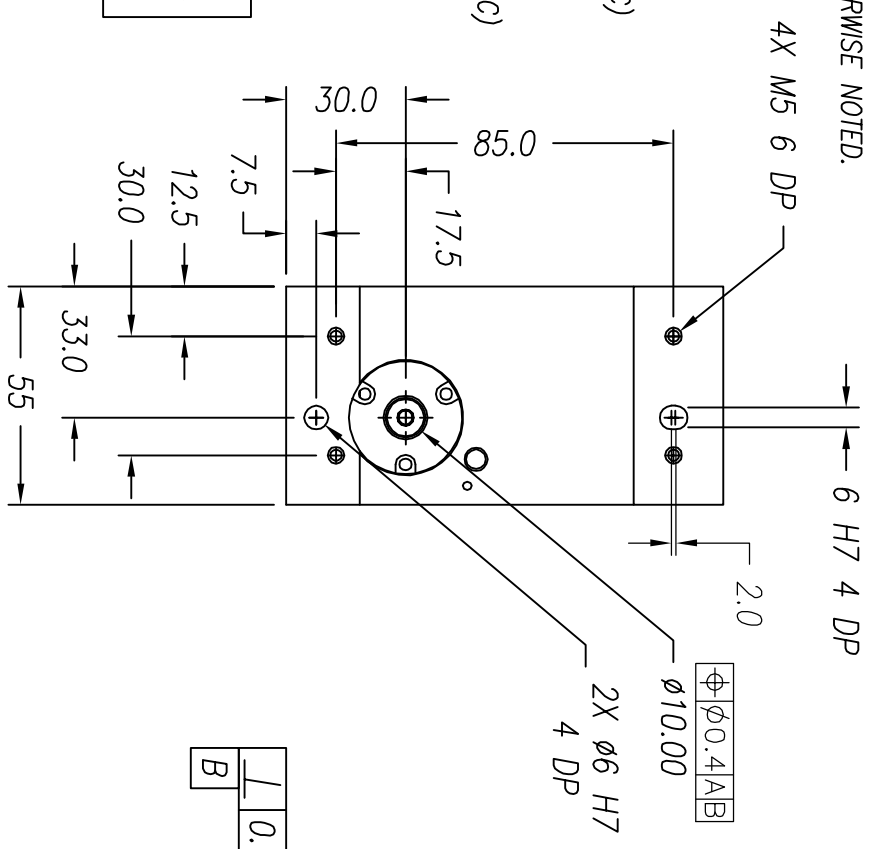


NOTES: (UNLESS OTHERWISE SPECIFIED)

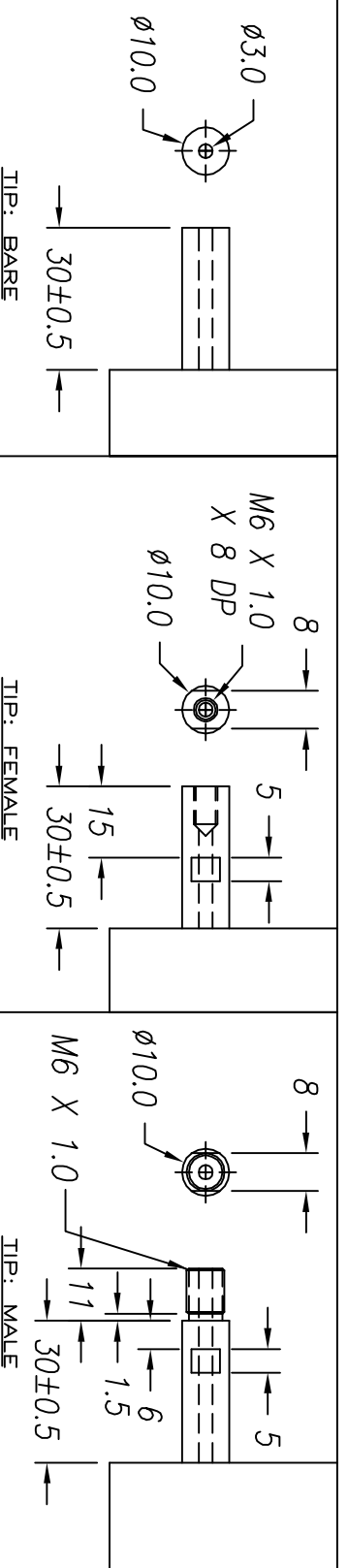
1. ALL DIMENSIONS ARE IN MILLIMETER UNLESS OTHERWISE NOTED.
2. LINEAR SPECIFICATION:
  - LINEAR STROKE: 150.0 +1.0/-0 mm
  - FORCE CONSTANT: 12.5 N/AMP
  - PEAK FORCE: 19.5 N @ 1.8 AMPS (48 VDC)
  - CONTINUOUS FORCE: 12.5 N @ 1.0 AMPS (48 VDC)
  - COIL DC RESISTANCE: 25 OHMS @ 22°C
  - COIL INDUCTANCE: 6.8 mH @ 1 kHz
  - ENCODER RESOLUTION: 0.5, 1, 5 MICROMETER (NC)
  - ENCODER ACCURACY: ±4 Counts
3. MOVING MASS: 400 GRAMS
4. TOTAL MASS: 4650 GRAMS
5. OPERATING TEMPERATURE: -10°C TO +65°C

SIGNATURE NEEDED FOR ORDER APPROVAL  
 SIGN \_\_\_\_\_ DATE \_\_\_\_\_  
 APPROVAL NOT RECEIVED WITHIN  
 48 HOURS MAY AFFECT DELIVERY



DB-25P PINOUT

1	+5VDC	14	LINEAR PHASE A+
2	+5V RETURN	15	NO CONNECTION
3	NO CONNECTION	16	LINEAR PHASE B+
4	LINEAR PHASE A-	17	NO CONNECTION
5	NC	18	LINEAR INDEX +
6	NC	19	COIL -
7	COIL +	20	COIL -
8	COIL +	21	NO CONNECTION
9	LINEAR PHASE B-	22	NO CONNECTION
10	NO CONNECTION	23	LINEAR INDEX -
11	NC	24	NO CONNECTION
12	NC	25	NO CONNECTION
13	NO CONNECTION		



<p>TOLERANCES ARE:</p> <table border="1"> <tr><td>X</td><td>±</td><td>0.50</td></tr> <tr><td>X.X</td><td>±</td><td>0.1</td></tr> <tr><td>X.XX</td><td>±</td><td>0.05</td></tr> <tr><td>X.XXX</td><td>±</td><td></td></tr> <tr><td>ANGULARITY</td><td>±</td><td>0.1°</td></tr> <tr><td>CONCENTRIC</td><td>±</td><td>0.01</td></tr> <tr><td>ROUNDNESS</td><td>±</td><td>0.05</td></tr> <tr><td>EDGE BREAK</td><td></td><td>0.2 MAX</td></tr> <tr><td>CHAMFER</td><td></td><td>0.2 MAX</td></tr> </table>		X	±	0.50	X.X	±	0.1	X.XX	±	0.05	X.XXX	±		ANGULARITY	±	0.1°	CONCENTRIC	±	0.01	ROUNDNESS	±	0.05	EDGE BREAK		0.2 MAX	CHAMFER		0.2 MAX	<p>MATERIAL: ALUMINUM 6061-T6</p>		<p>REF. NUMBER LAL55-150-7</p>	
X	±	0.50																														
X.X	±	0.1																														
X.XX	±	0.05																														
X.XXX	±																															
ANGULARITY	±	0.1°																														
CONCENTRIC	±	0.01																														
ROUNDNESS	±	0.05																														
EDGE BREAK		0.2 MAX																														
CHAMFER		0.2 MAX																														
<p>HEAT TREAT: / RC</p>		<p>DESIGNED BY: TOAN VU</p>		<p>CHECKED BY:</p>																												
<p>MACHINE FINISH: 3.2 /</p>		<p>DRAWN BY: L. RAKOW</p>		<p>DATE: 09/09/02</p>																												
<p>EXCEPT NOTED.</p>		<p>PART NAME: LAL55-150-7X-1</p>		<p>DATE: 7/27/06</p>																												
<p>PROTECTIVE FINISH ELECTROLESS NICKEL</p>		<p>SCALE: NONE</p>		<p>DWG SIZE: B</p>																												
<p>FILE NAME: LAL55-150-7_G</p>		<p>SPEC. NUMBER:</p>		<p>PART NUMBER: LAL55-150-7X-1</p>																												
				<p>CONTRACT: STD</p>																												
				<p>SHEET NUMBER: 1 OF 1</p>																												
				<p>REVISION: H</p>																												

**SMAC**

REVISIONS

REV	DATE	ECN	DESCRIPTION	APP
F	2/21/05	3502	SEE ECN	SMH
G	7/27/06	3991	UPDATED SHAF TIP DETAILS	LR
H	1/19/16	5688	PART NUMBER CHANGE	SB