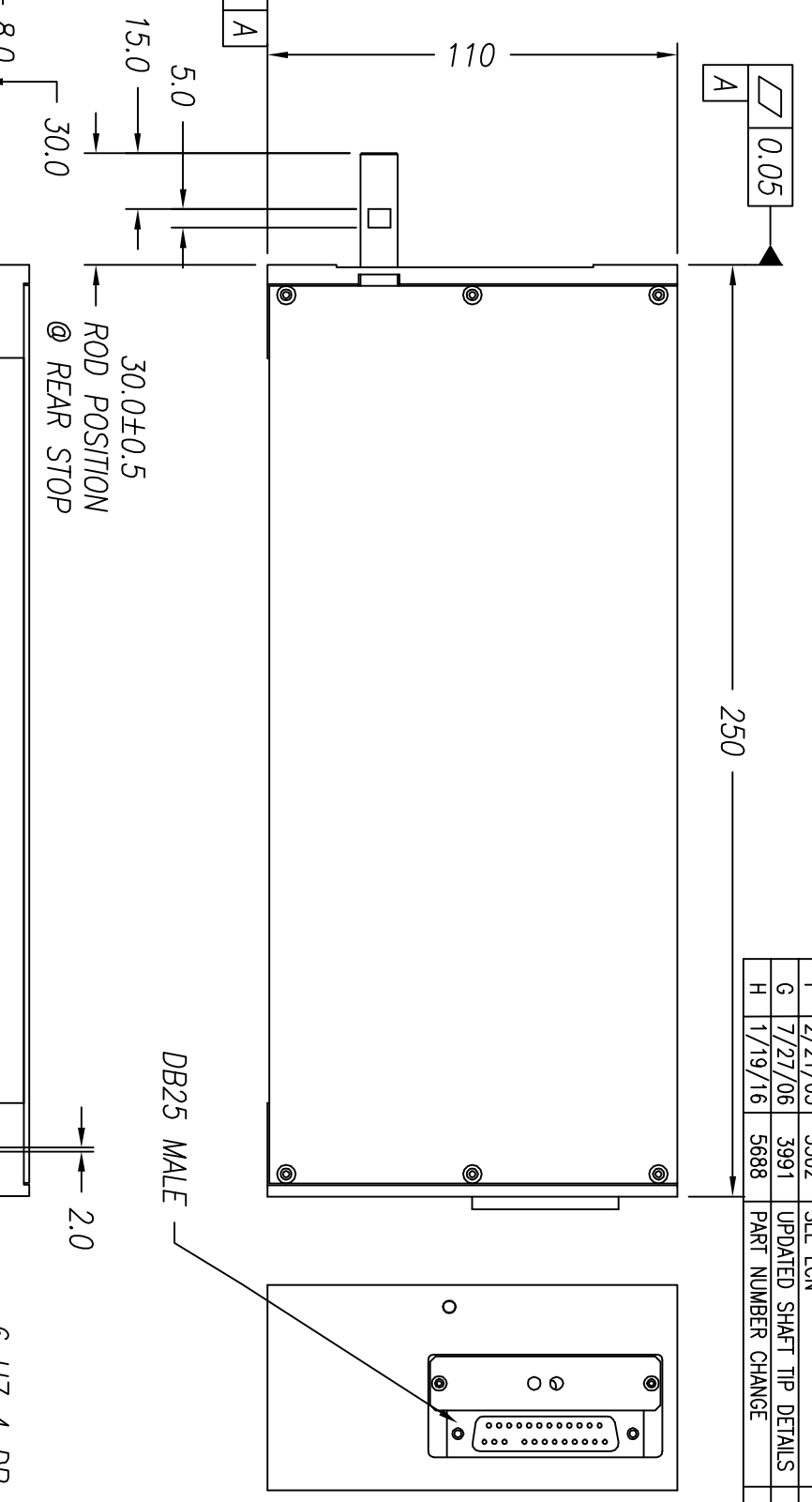
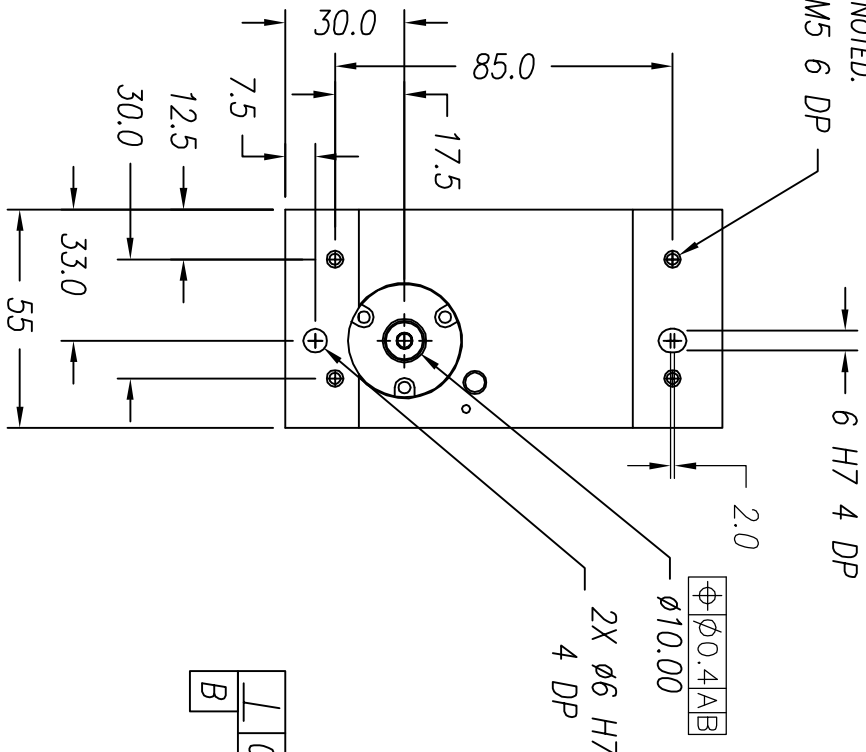


NOTES: (UNLESS OTHERWISE SPECIFIED)

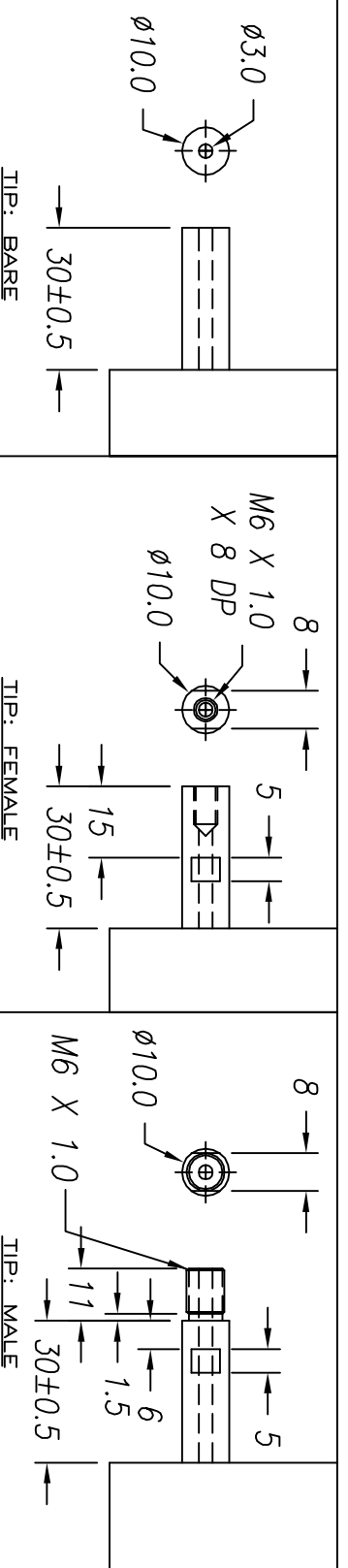
- ALL DIMENSIONS ARE IN MILLIMETER UNLESS OTHERWISE NOTED.
- LINEAR SPECIFICATION: 4X M5 6 DP
- LINEAR STROKE: 150.0 +1.0/-0 mm
- FORCE CONSTANT: 10.0 N/AMP
- PEAK FORCE: 13.0 N @ 1.3 AMPS (24 VDC)
- CONTINUOUS FORCE: 10.0N @ 1.0 AMPS (24 VDC)
- COIL DC RESISTANCE: 16.5 OHMS @ 22°C
- COIL INDUCTANCE: 4.3 mH @ 1 kHz
- ENCODER RESOLUTION: 0.5, 1, 5 MICROMETER (NC)
- ENCODER ACCURACY: ±4 Counts
- MOVING MASS: 400 GRAMS
- TOTAL MASS: 4650 GRAMS
- OPERATING TEMPERATURE: -10°C TO +65°C

SIGNATURE NEEDED FOR ORDER APPROVAL
 SIGN _____ DATE _____
 APPROVAL NOT RECEIVED WITHIN
 48 HOURS MAY AFFECT DELIVERY



DB-25P PINOUT

1	+5VDC	14	LINEAR PHASE A+
2	+5V RETURN	15	NO CONNECTION
3	NO CONNECTION	16	LINEAR PHASE B+
4	LINEAR PHASE A-	17	NO CONNECTION
5	NC	18	LINEAR INDEX +
6	NC	19	COIL -
7	COIL +	20	COIL -
8	COIL +	21	NO CONNECTION
9	LINEAR PHASE B-	22	NO CONNECTION
10	NO CONNECTION	23	LINEAR INDEX -
11	NC	24	NO CONNECTION
12	NC	25	NO CONNECTION
13	NO CONNECTION		



REVISIONS

REV	DATE	ECN	DESCRIPTION	APP
F	2/21/05	3502	SEE ECN	SMH
G	7/27/06	3991	UPDATED SHAF T TIP DETAILS	LR
H	1/19/16	5688	PART NUMBER CHANGE	SB

SMAC

TOLERANCES ARE:		MATERIAL:		REF. NUMBER	
X	± 0.50	ALUMINUM		LAL55-150-5	
X.X	± 0.1	6061-T6			
X.XX	± 0.05	HEAT TREAT:	RC	DESIGNED BY:	TOAN VU
X.XXX	± 0.01		DEEP	DRAWN BY:	L. RAKOW
ANGULARITY ±	0.1°	MACHINE FINISH:	3.2	PART NAME:	LAL55-150-5X-1
CONCENTRIC ±	0.01	EXCEPT NOTED.	✓	SCALE:	NONE
ROUNDNESS ±	0.05	PROTECTIVE FINISH	ELECTROLESS NICKEL	DWG SIZE:	B
EDGE BREAK	0.2 MAX	SPEC. NUMBER:		PART NUMBER:	LAL55-150-5X-1
CHAMFER	0.2 MAX			DATE:	09/09/02
FILE NAME:	LAL55-150-5_G			CHECKED BY:	
				DATE:	09/09/02
				APPROVED BY:	
				DATE:	7/27/06
				CONTRACT:	STD
				SHEET NUMBER:	1 OF 1
				REVISION:	H