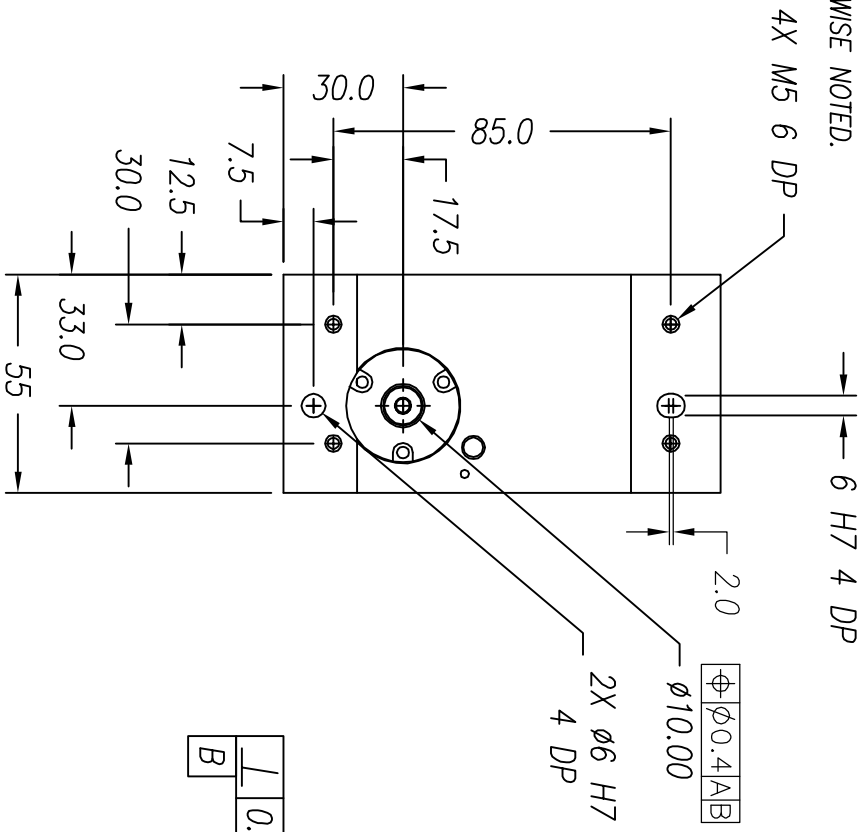


NOTES: (UNLESS OTHERWISE SPECIFIED)

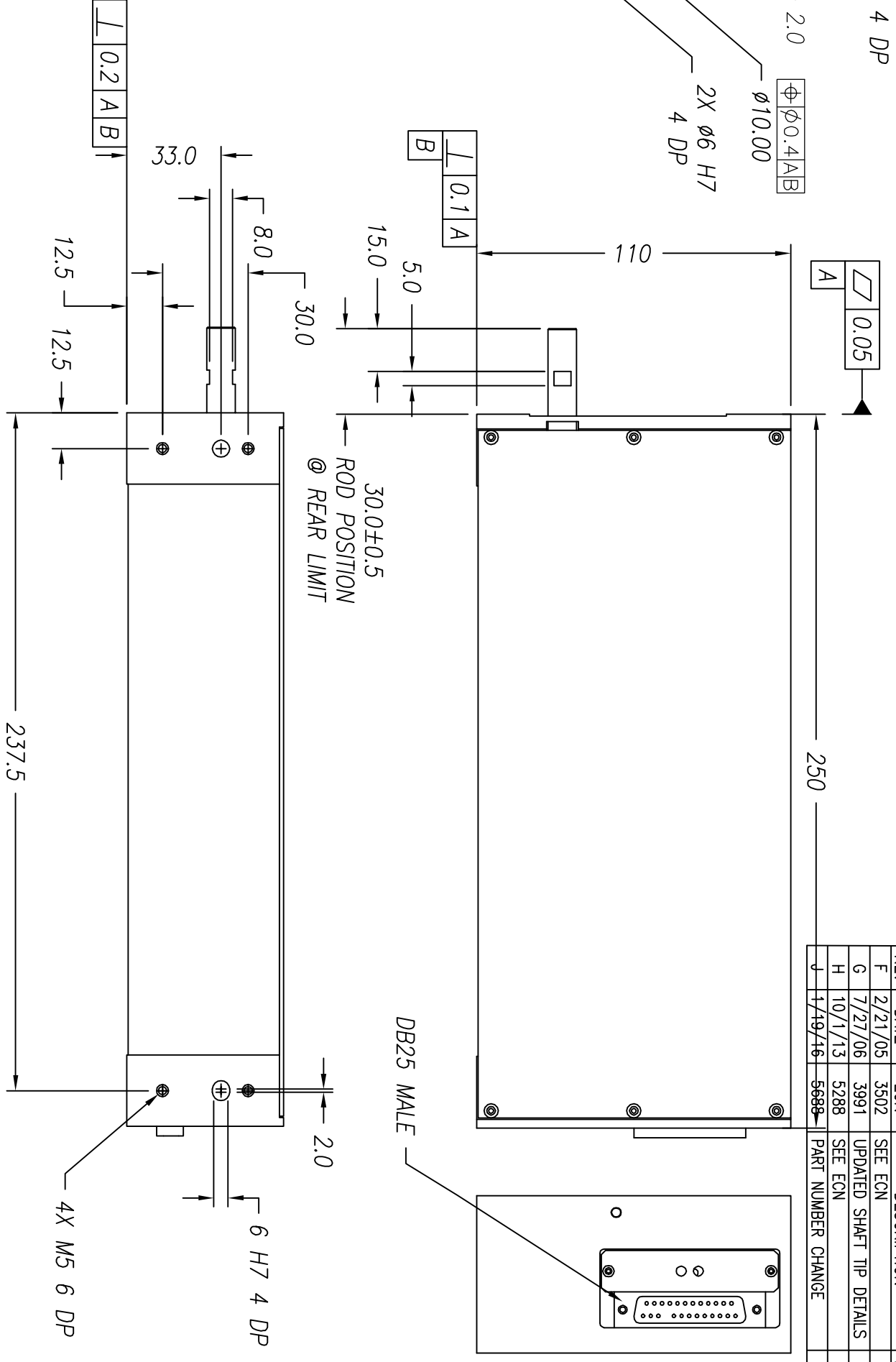
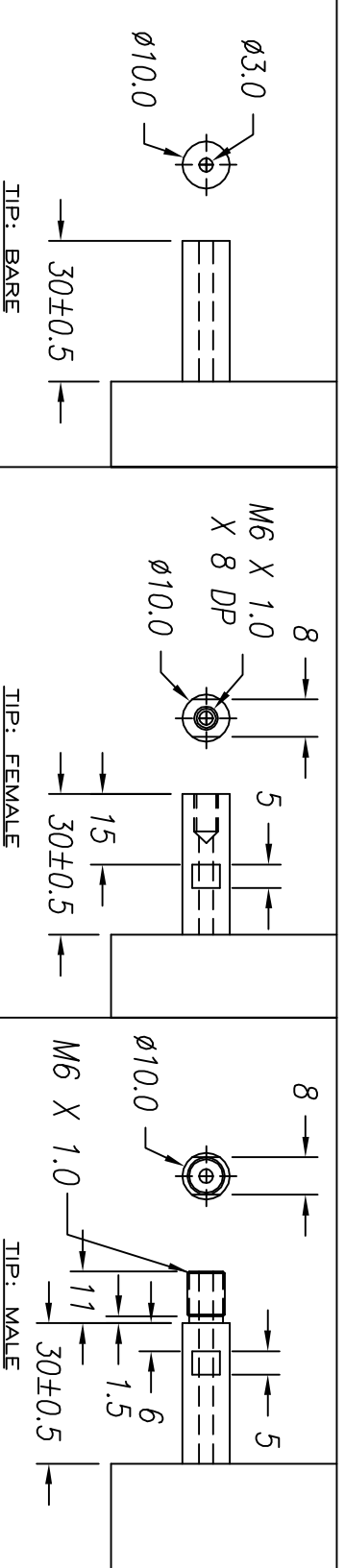
- ALL DIMENSIONS ARE IN MILLIMETER UNLESS OTHERWISE NOTED.
- LINEAR SPECIFICATION:
 - LINEAR STROKE: 100 +1.0/-0 mm
 - FORCE CONSTANT: 13.0 N/AMP
 - PEAK FORCE: 16.5 N @ 1.3 AMPS (24 VDC)
 - CONTINUOUS FORCE: 13.0 N @ 1.0 AMPS (24 VDC)
 - COIL DC RESISTANCE: 16.5 OHMS @ 22°C
 - COIL INDUCTANCE: 4.3 mH @ 1 kHz
 - ENCODER RESOLUTION: 0.5, 1, 5 MICROMETER
 - ENCODER ACCURACY: ±4 Counts
- MOVING MASS: 300 GRAMS
- TOTAL MASS: 3800 GRAMS
- OPERATING TEMPERATURE: 0°C TO +65°C

SIGNATURE NEEDED FOR ORDER APPROVAL
 SIGN _____ DATE _____
 APPROVAL NOT RECEIVED WITHIN
 48 HOURS MAY AFFECT DELIVERY



DB-25P PINOUT

| | | | |
|----|-----------------|----|-----------------|
| 1 | +5VDC | 14 | LINEAR PHASE A+ |
| 2 | +5V RETURN | 15 | NO CONNECTION |
| 3 | NO CONNECTION | 16 | LINEAR PHASE B+ |
| 4 | LINEAR PHASE A- | 17 | NO CONNECTION |
| 5 | NC | 18 | LINEAR INDEX + |
| 6 | LIMIT RETURN | 19 | COIL - |
| 7 | COIL + | 20 | COIL - |
| 8 | COIL + | 21 | NO CONNECTION |
| 9 | LINEAR PHASE B- | 22 | NO CONNECTION |
| 10 | NO CONNECTION | 23 | LINEAR INDEX - |
| 11 | LIMIT + | 24 | NO CONNECTION |
| 12 | LIMIT - | 25 | NO CONNECTION |
| 13 | NO CONNECTION | | |



REVISIONS

| REV | DATE | ECN | DESCRIPTION | APP |
|-----|----------|------|--------------------------|-----|
| F | 2/21/05 | 3502 | SEE ECN | SMH |
| G | 7/27/06 | 3991 | UPDATED SHFT TIP DETAILS | LR |
| H | 10/11/13 | 5288 | SEE ECN | KGS |
| J | 1/19/16 | 5688 | PART NUMBER CHANGE | SB |

SMAC

REF. NUMBER: LAL55-100-5

CONTRACT: STD

SHEET NUMBER: 1 OF 1

DESIGNED BY: TOAN VU DATE: 09/09/02 CHECKED BY: DATE:

DRAWN BY: KARL STOCKS DATE: 10/11/13 APPROVED BY: DATE:

PART NAME: LAL55-100-5X-1

SCALE: NONE DWG SIZE: B PART NUMBER: LAL55-100-5X-1

FILE NAME: LAL55-100-5_H

TOLERANCES ARE:

| | | |
|------------|---|---------|
| X | ± | 0.50 |
| X.X | ± | 0.1 |
| X.XX | ± | 0.05 |
| X.XXX | ± | 0.01 |
| ANGULARITY | ± | 0.1° |
| CONCENTRIC | ± | 0.01 |
| ROUNDNESS | ± | 0.05 |
| EDGE BREAK | | 0.2 MAX |
| CHAMFER | | 0.2 MAX |

MATERIAL: ALUMINUM 6061-T6

HEAT TREAT: RC

MACHINE FINISH: 1.6

EXCEPT NOTED.

PROTECTIVE FINISH: ELECTROLESS NICKEL

SPEC. NUMBER: DO NOT SCALE DWG