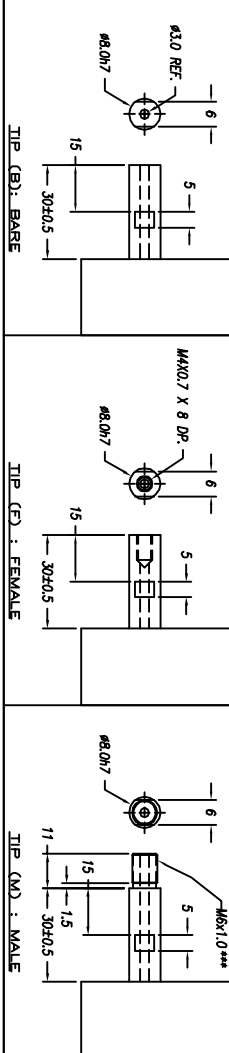
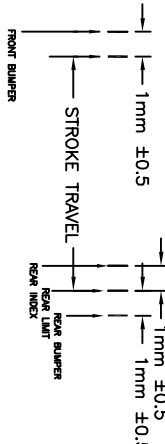
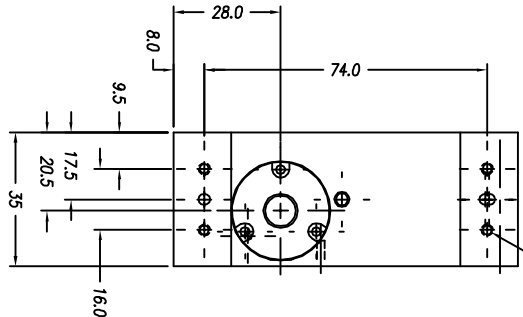


**NOTES: (UNLESS OTHERWISE SPECIFIED)**

1. ALL DIMENSIONS ARE IN mm OTHERWISE NOTED.
2. LINEAR SPECIFICATION:  
 LINEAR STROKE: 25.0±1.0/-0 mm  
 FORCE CONSTANT: 15.5 N/AMP  
 PEAK FORCE: 35 N @ 2.9 AMPS (24 VDC)  
 CONTINUE FORCE : 24 N @ 2.0 AMPS (24 VDC)  
 COIL DC RESISTANCE: 7 OHMS @ 22°C  
 COIL INDUCTANCE: 1.1 mH @ 1 KHZ  
 ENCODER RESOLUTION: 0.5, 1, 5.0 MICRON-METER  
 ENCODER ACCURACY: ±5 COUNTS
3. MOVING MASS: TBD
4. TOTAL MASS: TBD
5. OPERATING TEMPERATURE: 0°C TO +65°C

DB-26P PINDOUT

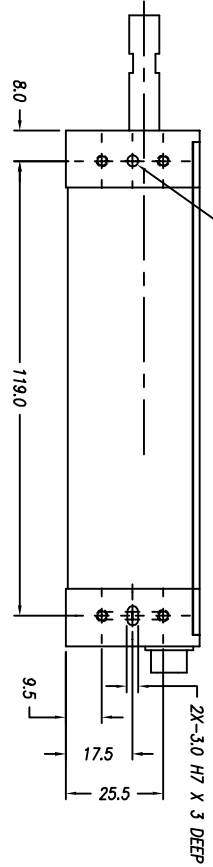
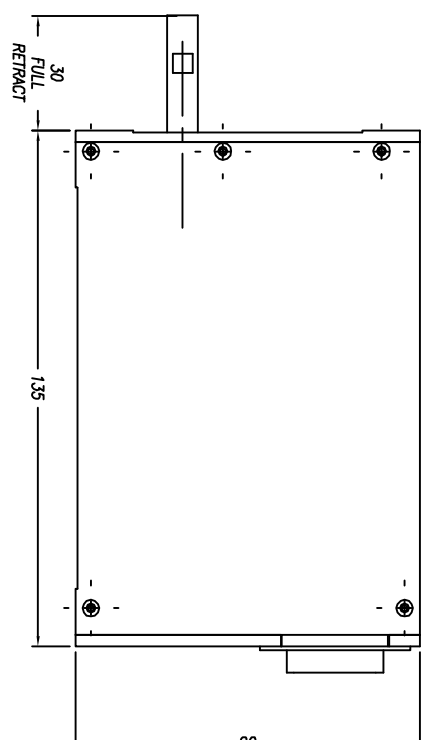
1	(U)	PH. A+
2	(U)	PH. B+
3	(U)	PH. Z+
4	NC	
5	NC	
6	U/O	RIN
7	NC	
8	NC	
9	NC	
10	(U)	PH. A-
11	(U)	PH. B-
12	(U)	PH. Z-
13	NC	
14	LIMIT	+
15	LIMIT	-
16	NC	
17	NC	
18	NC	
19	+SDG	
20	SV	RIN
21	(U)	COIL +
22	(U)	COIL -
23	(U)	COIL -
24	(U)	COIL -
25	NC	
26	NC	



SIGNATURE NEEDED FOR ORDER APPROVAL  
 DATE \_\_\_\_\_  
 APPROVAL NOT RECEIVED WITHIN  
 48 HOURS MAY AFFECT DELIVERY

REVISIONS

REV	DATE	ECN	DESCRIPTION	APP
A	9/10/03	2908	SEE ECN	GK
B	12/22/03	2997	CHANGED BODY, SEE ECN	SEK
C	10/13/04	3354	SEE ECN ***	CAW
D	10/1/13	5288	SEE ECN	KGS
E	8/11/14	5441	UPDATE PINDOUT	RH
F	1/15/16	5688	PART NUMBER CHANGE	SB



TOLERANCES ARE: X ± 0.50 XX ± 0.1 XXX ± 0.05 XXXX ± 0.1 ANGULARITY ± 0.01 CONCENTRIC ± 0.05 ROUNDNESS ± 0.2 MAX EDGE BREAK 0.1 MAX CHAMFER		MATERIAL: ALUMINIUM 6061-T6		HEAT TREAT: RC		DESIGNED BY: G. KAMBARA		DATE: 9/10/03		CHECKED BY: APPROVED BY:		DATE: DATE:		REF. NUMBER: LAL35-025-6	
MACHINE FINISH: DEEP		EXCEPT NOTED: PROTECTIVE FINISH ELECTROLESS NICKEL		1.6/		PART NAME: LAL35-025-5X-2		SCALE: NONE		DWG. SIZE: B		PART NUMBER: LAL35-025-5X-2		CONTRACT: STD	
FILE NAME: LAL35-025-6-D		SPEC. NUMBER:		DO NOT SCALE DWG		NONE		B		LAL35-025-5X-2		SHEET NUMBER: 1 OF 1		REVISION: F	

**SMAC**