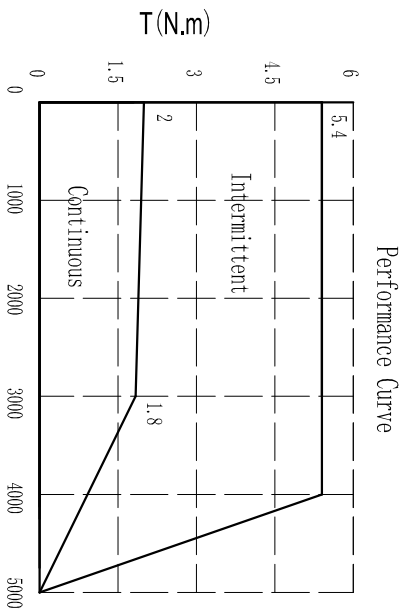
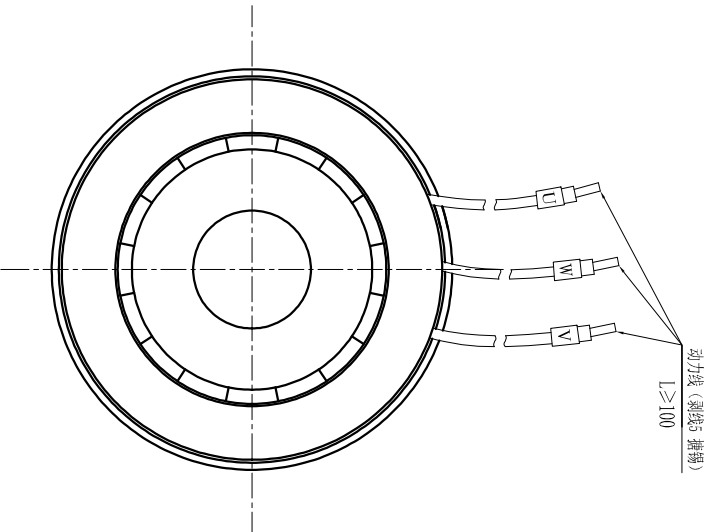
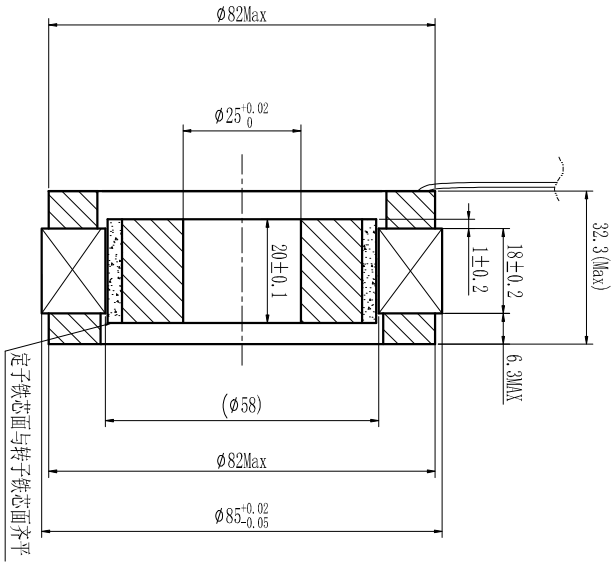


U相 MOTOR U	兰 BLUE(14AWG)
V相 MOTOR V	棕 BROWN(14AWG)
W相 MOTOR W	紫 PURPLE(14AWG)

动力线 Power Wire



Technical Data

极数 No. of poles	16
直流母线电压 DC Link Voltage U _{dc} (V)	48
额定功率 Rated Power P _N (W)	565
额定转速 Rated Speed n _N (rpm)	3000
额定转矩 Rated Torque T _N (N.m)	1.8
额定电流 Rated Current I _N (A)	19
最大转矩 Maximum Torque T _{max} (N.m)	5.4
最大电流 Maximum Current I _{max} (A)	62
线电阻 Resistance line-line R (Ω)	0.058
电感 Inductance line-line L _L (mH)	0.09
电气时间常数 Electrical time constant T _e (ms)	1.55
机械时间常数 Mechanical time constant T _m (ms)	1.38
反电动势常数 Voltage constant K _v (V/(rpm))	5.9
转矩常数 Torque constant K _t (Nm/A)	0.099
转动惯量 Rotor moment of inertia J _m (Kg, cm ²)	1.33
绝缘等级 Insulation class	F
重量 Weight (Kg)	0.7

技术要求：
定子引出线按GB/T 7345-2008要求：
对定子三相线，每根引出线应能承受9.0N的拉力；
引出线不能断开，绝缘层和线芯不能损坏。

VER	DESCRIPTION OF CHANGE	VER	ECN NO.	CHANGE	APP'D	DATE	DESIGN	DATE	P/NO.
						22-03-26	ZZT	22-03-26	30708037SS
		FINAL TOLERANCE REFERENCE GB/T 1804-m Unit:mm					CHECK ZZT		TITLE 外形图
		LINER					APPROVE SL		USED ON FMC08618-0056-3025N-90S00
		≤6	±0.1	>6~30	±0.2			SCALE:	VER: V1.0
		>30~120	±0.3	>120~400	±0.5	FIRST ANGLE PROJECTION		KINAVO MOTOR	
					SHEET			OF	