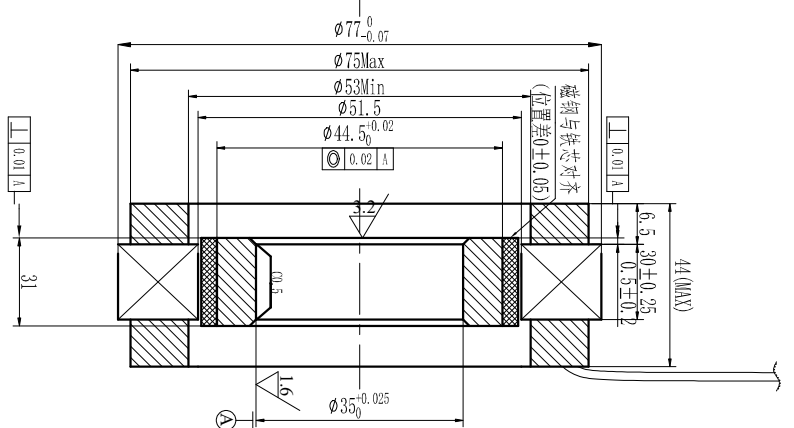
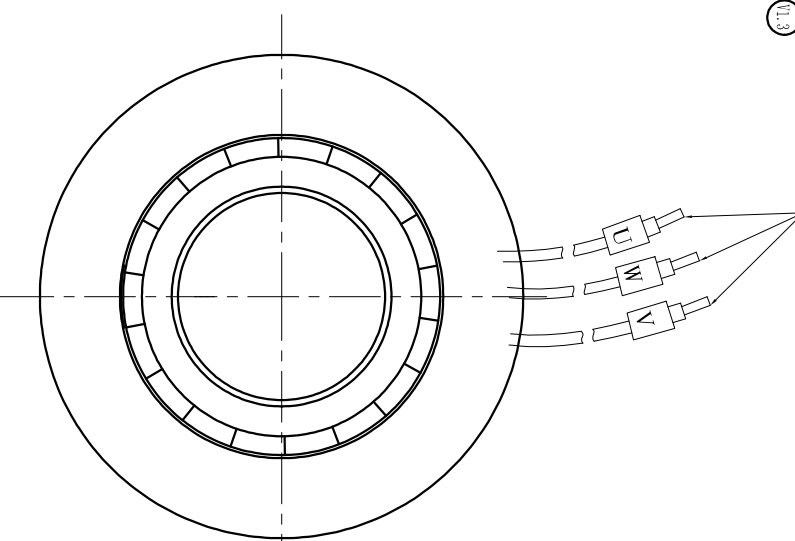


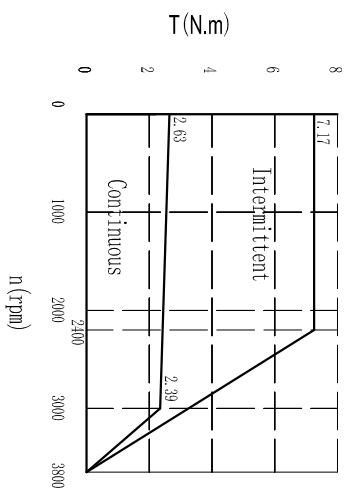
FUNCTION	COLOR
MOTOR U	BLUE (14AWG)
MOTOR V	BROWN (14AWG)
MOTOR W	PURPLE (14AWG)

L=170~190 剥线5指锡

Power Wire



技术要求:
定子引出线按GB/T 7345-2008要求:
对定子三相线, 每根引出线应能承受9.0N的拉力;
引出线不能断开, 绝缘层和线芯不能损坏。



Technical Data (11.4)

No. of poles	16
DC Link Voltage U _{dc} (DC Link)	48
Rated Power P _r (W)	750
Rated Torque T _r (N.m)	2.39
Rated Speed n _r (rpm)	3000
Rated Current I _s (A)	18.6
Maximum torque T _m (N.m)	7.17
Maximum Current I _m (A)	61
Standstill torque T _s (N.m)	2.63
Standstill current I _s (A)	20.5
Resistance line-line R _c (Ω)	0.097
Close circuit inductance L _c -(mH)	±20% 0.23
Open circuit inductance L _l -0 (mH)	0.27
Electrical time constant τ _e (ms)	2.37
Mechanical time constant τ _m (ms)	1.21
Voltage constant K _v (V/krpm)	±5% 7.96
Torque constant K _t (Nm/A)	0.131
Rotor moment of inertia J _m (Kg.cm ²)	1.25
Insulation class	F
Weight (kg)	0.8
Feed back device	
Temperature Sensor	
Cooling method	Totally enclosed non-ventilated
Temperature	guarantee the measured winding temperature is between -20°C and 120°C
Humidity	Below 90%RH (No dewing)
Environment	Far away active gas, combustible gas, oil drop, ash
Installation altitude	DP T0 1000m; rated power, above 1000m: 1.5% power, decreasing per 100m, max. 4000m

VER	DESCRIPTION OF CHANGE	V1.5	K4230181	ZT	SL	DATE	DESIGN	P.N.
V1.4	更改电参数	REV	ECN NO.	DRN	APPD	22-04-25	ZZZJ	307080284SS
V1.5	新增开路电感数据	UNLESS OTHERWISE SPECIFIED		MATERIAL	CONTR.	22-04-25	CHECK	Outside Drawing
		TOLERANCES			APPD	22-04-25	LSJ	USED ON
		DECIMALS: ±0.5			SL			FWC07790-007-5-0395N-80S00
		ANGULAR: ±0°30'			SCALE			DWG NO.
		UNIT: mm			SHEET			REV
		DO NOT SCALE DRAWING			OF			V1.5

KINAVO MOTOR