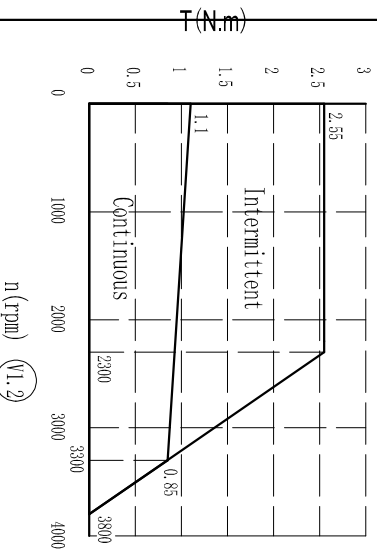
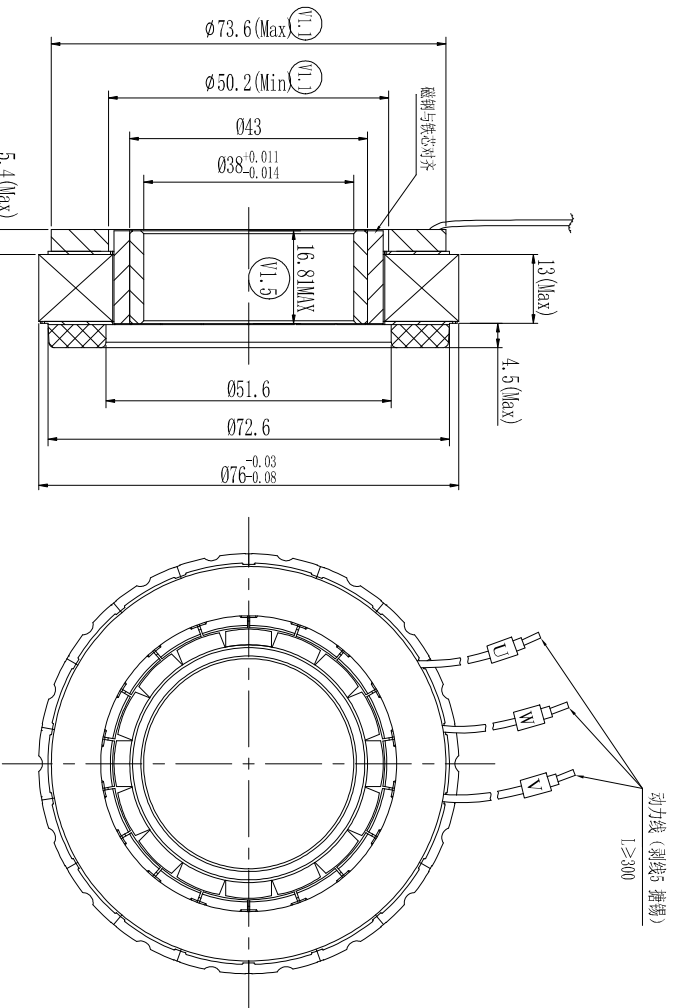


定义 FUNCTION	颜色 COLOR
U相 MOTOR U	兰 BLUE (18AWG)
V相 MOTOR V	棕 BROWN (18AWG)
W相 MOTOR W	紫 PURPLE (18AWG)

### 动力线 Power Wire



Performance Curve

**技术要求:**  
 定子引出线按GB/T 7345-2008要求:  
 对定子三相线, 每根引出线应能承受9N的拉力,  
 试验后, 引出线不能断开, 绝缘层和线芯不能损坏。

VER	DESCRIPTION OF CHANGE	VI. 4	KA230058	ZT
(VI.1)	增加出线端子包外圆与内圆尺寸 调整出线端子包最大高度	VER	ECN NO.	CHANGE
VI. 2	增加性能曲线	FINAL TOLERANCE REFERENCE GB/T 1804-m Unit:mm		
VI. 3	改规格型号	LINER		
VI. 5	16.76改为16.81max	≤6	±0.1	>6~30
VI. 5	更改RDP数值	>30~120	±0.3	>120~400 ±0.5

Technical Data (VI.5)	
No. of poles	16
DC Link Voltage U <sub>dc</sub> (DC Link)	48
Rated Power P <sub>N</sub> (W)	293
Rated Torque T <sub>N</sub> (N.m)	0.85
Rated Speed n <sub>N</sub> (rpm)	3300
Rated Current I <sub>N</sub> (A)	6.7
Maximum torque T <sub>m</sub> (N.m)	2.55
Maximum Current I <sub>m</sub> (A)	21.44
Standstill torque T <sub>s</sub> (N.m)	1.1
Standstill current I <sub>s</sub> (A)	7.37
Resistance line-line R <sub>L</sub> (Ω) (at 25° C)	±20%
Close circuit inductance L <sub>c</sub> (mH)	±20%
Open circuit inductance L <sub>o</sub> (mH)	0.88
Electrical time constant τ <sub>e</sub> (ms)	2.07
Mechanical time constant τ <sub>m</sub> (ms)	2.35
Voltage constant K <sub>v</sub> (V/krpm)	8.0
Torque constant K <sub>t</sub> (Nm/A)	0.132
Rotor moment of inertia J <sub>r</sub> (kg.cm <sup>2</sup> )	0.847
Insulation class	F
Weight (kg)	0.33
Temperature Sensor	
Cooling method	Totally enclosed non-ventilated
Temperature	guarantee the measured winding temperature is between -20°C and 120°C
Humidity	Below 90%RH (No dewing)
Environment	Far away active gas, combustible gas, oil drip, ash
Installation altitude	Up to 1000m; rated power, above 1000m: 1.5% power decreasing per 100m; max. 1000m

SL	23.2.16	DATE	DESIGN	DATE
AP <sup>2</sup> D			SL	20-07-17
MATERIAL			CHECK	20-07-17
			WJD	20-07-17
			APPROVE	
			PHX	20-07-17
FIRST ANGLE PROJECTION				
SHEET			OF	