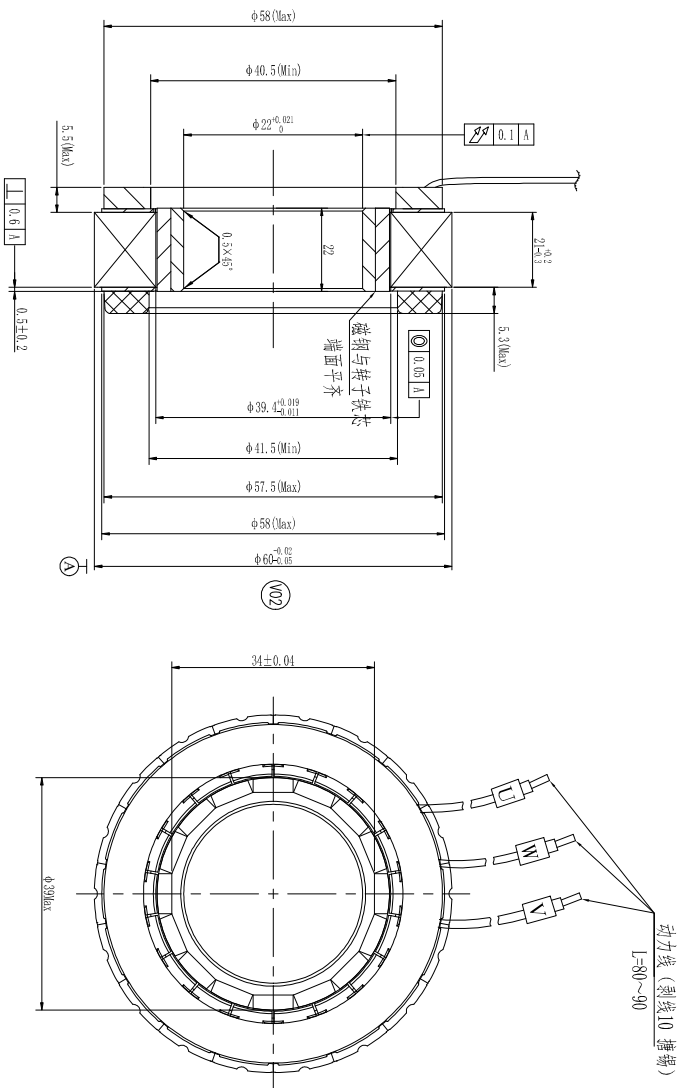


技术要求:
引出线按GB/T 7345-2008要求,
对定子三相线, 每根引出线应能承受9.0N的拉力,
试验后, 引出线不能断开, 绝缘层和线芯不能损坏。

FUNCTION	COLOR
MOTOR U	BLUE (18AWG)
MOTOR V	BROWN (18AWG)
MOTOR W	PURPLE (18AWG)

Power Wire



Technical Data

No. of poles	16
DC Link Voltage U_{dc} (DC link)	48
Rated Power P_n (W)	258
Rated Torque T_n (N.m)	0.65
Rated Speed n_n (rpm)	3790
Rated Current I_n (A)	7.2
Maximum torque T_m (N.m)	1.57
Maximum Current I_m (A)	17.4
Standstill torque T_s (N.m)	0.81
Standstill current I_s (A)	9
Resistance line-line R (Ω)	±10% 0.241at 25°C
Inductance line-line L (mH)	±20% 0.275
Electrical time constant τ_e (ms)	1.14
Mechanical time constant τ_m (ms)	1.36
Voltage constant K_e (V/krpm)	±5% 6.05
Torque constant K_t (Nm/A)	1
Rotor moment of inertia J_m (Kg.cm ²)	0.328
Insulation class	F
Weight (kg)	0.35
Feed back device	
Temperature Sensor	
Cooling method	Totally enclosed non-ventilated
Temperature	guarantee the measured winding temperature is between -20°C and 120°C
Humidity	Below 90%RH (No dewing)
Environment	Per any active gas-combustible gas,oil drop,ash
Installation altitude	above 1000m: 1.5% power decrease/sh per 100m,max.4000m

Environmental conditions

REV	EON NO.	DRN	APPD	DATE	DESIGN	DATE	P/N
UNLESS OTHERWISE SPECIFIED				SL	20-09-25	307080358SS	
TOLERANCES:				CHECK			
ANGULAR:				WYD	20-09-25	Outside Drawing	
.x ±0.5				APPD			
.xx ±0.25				PHX	20-09-25		
.xxx ±0.1				SCALE			
UNIT: mm				SHEET			
DO NOT SCALE DRAWING				OF			

KINAVVO MOTOR